

South & Saints



AARCH
African American Resources
Cultural and Heritage Society

25 YEARS
MARYLAND ENSEMBLE
THEATRE



Cellar Door



**MODERN
AMERICAN**



**UNIQUE BAR +
EXCITING ENTERTAINMENT**

**COMEDY SHOW
EVERY SUNDAY NIGHT**

5 E. Church St.
Frederick, MD 21701
301-695-8460

www.cellardoorfrederick.com

FRIENDS, FAMILY, FOODIES, SPORTS FANS, PARTIERS,
AND MUSIC LOVERS ARE ALL WELCOME AT AGAVE 137



TEQUILA BAR



& KITCHEN

137 N. MARKET ST.
FREDERICK, MD 21701
(240)439-4367
WWW.AGAVE137.COM

EST. 2022
AGAVE 137
TEQUILA BAR & KITCHEN

South & Saints

featuring

**Gifty Amponsem, Evan Carrington, Victoria Causey, Alonzo Cook,
Marcus Kersey Jr., Rona Mensah**

Director
Ray Hatch

Stage Manager
Shayden Jamison

Scenic Designer
Wendell Poindexter

Lighting Designer
Tabetha White

Costume Designer
Brandi Robinson

Props Designer
Lori Boyd

Sound Designer
Tom Majorov

Devising Leads

Gené Fouché, Shea-Mikal Green, Julie Herber, Tad Janes

This show is made possible by a grant from the Heart of the Civil War Heritage Area, a certified heritage area of the Maryland Heritage Areas Authority.



MET'S MAINSTAGE SEASON SPONSORS:



Additional support:



Joseph D. Baker
FUND



The
George L. Shields
Foundation

This project is supported in part by Frederick Arts Council and the National Endowment for the Arts.



FREDERICK

MARYLAND

On behalf of The City of Frederick, welcome to Maryland Ensemble Theatre and to our Arts and Entertainment District.

We are proud to be home to this professional ensemble company. For 25 years, MET has provided accessibility to high quality and thought-provoking theatre, helping ensure a diversity of opportunities for our community to experience visual and performing arts in Frederick.

Please use your interaction with MET as a catalyst to further explore the many entertainment, shopping, and dining options available in Frederick.

Enjoy the show!

Michael O'Connor
Mayor, City of Frederick

VALLEY GRAPHIC SERVICE, INC.

is proud to support

Maryland Ensemble Theatre

Valley Graphic Service strives on being a *trusted and experienced* full service, in-house commercial printing company. Our reputation comes from the knowledgeable, dedicated and loyal family of employees. For over 30 years we have served a loyal base of satisfied customers locally and nationwide.

Choose Valley Graphic Service, we promise you will feel confident with your printing experience.

Call or email one of our experts today.

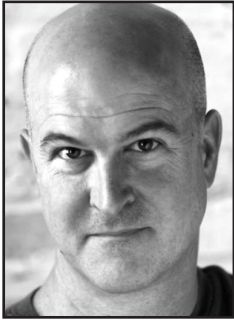
**Because There's
More to Printing,
Than Ink On Paper**



VALLEY GRAPHIC SERVICE, INC.

93 Monocacy Blvd., Suite A-1
Frederick, Maryland 21701
301.694.8825 • 800.649.8825
sales@valleyps.com

FROM MET'S ARTISTIC DIRECTOR



Since our inception, Maryland Ensemble Theatre has built original work. Since the summer of 1997, MET has premiered over 60 new works and *South & Saints* is our 20th mainstage world premiere!

South & Saints brings together community storytelling and civic engagement. The piece began with conversations during the pandemic. We have a long tradition of building plays around community issues (*Skin Deep, Exuviae*) and pre-pandemic we had already begun a relationship with the African American Resources Cultural and Heritage Society (AARCH Society) to explore something similar. MET has also built pieces using the story circle method (*Ruby Slippers, I am NOT My Mother*) which was developed by John O'Neill at the Free Southern Theater and Junebug Productions with further inspiration from the work of Jo Carson by way of Jerry Stropnick.

For *South & Saints*, we embraced the stories from AARCH Society and others in the Black community to bring, not a documentary, but a snapshot of multiple perspectives on growing up in a Frederick community that was once completely segregated. AARCH Society is doing a tremendous job recording the history of this community and they are building a new Heritage Center at 125 East All Saints Street, so please help in creating this new and important center at <https://aarchsociety.org>.

We gathered over 20 community members for in-depth discussions and story circles over 6 events, for which we are massively grateful. The text in *South & Saints* either derives directly from those story circles or inspired pieces that were written intentionally for this production. In addition, the piece is about civic engagement. Following each performance we'll have a moderated community conversation about the piece and the issues within. This type of work is central to our organization and we hope you get as much excitement and fulfillment as us!

Tad Janes
Producing Artistic Director

THE DELAPLAINE *arts* CENTER

Everyone
Deserves
Art

The Delaplaine is located in historic downtown Frederick along beautiful Carroll Creek Park. Come and explore:

SEVEN ART GALLERIES

Showcasing 50+ exhibits by regional and national artists each year

EIGHT SPACIOUS STUDIOS

Housing 250+ classes, workshops, and summer camps each year for all ages and skill levels

THE ETCHISON-DAVIS LIBRARY

One of the largest free & public art reference libraries in Maryland

MONTHLY PROGRAMS & SPECIAL EVENTS

Artist Talks, Free Workshops for Kids, Annual Gala, and more

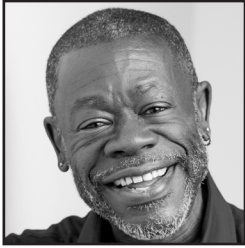


40 S Carroll St • Frederick, MD | 301.698.0656

delaplaine.org

Open Daily | FREE ADMISSION

FROM THE DIRECTOR



The name “South & Saints” was born due to the fact that All Saints Street here in downtown Frederick, not unlike Martin Luther King Blvd in other cities, was the central street where most people of color lived - but there were boundaries. The citizens who lived on All Saints Street didn’t call it All Saints; it was simply Saints Street. This production of *South & Saints* is what we call a “devised piece” meaning that the artists here at MET created it organically from beginning to end rather than working from a script.

Although MET has produced several other devised pieces, this was my very first foray into the process and it’s been fascinating. We began our journey with story circles; small groups of local Fredrick residents with long memories sitting in a circle & sharing treasured remembrances of growing up black in Frederick. We were lucky to be able to record several conversations with many lovely people (all of whose names are mentioned in the program) and heard from even more up to a point where we had more than we could possibly use.

People have stories that want to be told! The theme for our production is “segregation, integration, and gentrification.” We chose to concentrate on some of the more positive stories of surviving in a small town from the eyes of the people who experienced it. Our actors are not portraying anyone in particular nor were we interested in creating a documentary. But the stories they tell are directly from the experiences of our story circle participants.

Though none of our actors were old enough to experience segregation as it was (although situations still happen today), they’re old enough to have been told about certain incidents. Or, they might have experienced it today but didn’t realize it was happening when it did. I grew up in the era of “The Green Book,” one of the best-known African American travel guides. And my family traveled a lot. That book let us know the places that would welcome us and the ones to avoid. What I hope you take away from this is the feeling of community spirit, faith, patience and love it took to survive and flourish in a community that was only a few blocks long and wide.

Ray Hatch
Director

CAST OF CHARACTERS

Gifty Amponsem
Evan Carrington
Victoria Causey
Alonzo Cook
Marcus Kersey Jr.
Rona Mensah

CREW

Lori Boyd.....Props Designer
Genè FouchèDevising Leader
Shea-Mikal Green.....Devising Leader
Ray Hatch Director
Julie Herber.....Devising Leader
Shayden Jamison..... Stage Manager
Tad Janes..... Devising Leader, Projection Designer
Tom Majarov Sound Designer
Kim Parson Assistant Stage Manager
Brandi Robinson Costume Designer
Rachel Smith..... Costume Assistant
Tabetha White.....Lighting Designer
Melynda Burdette Wintrol..... Production Manager

WITH THANKS

Show Collaborators

Protean Gibril, Sonja (Dee) Brown-Jenkins, & Rosemary Chaney

AARCH Society

Kiki Wilson

OUT40 Media

Mary Mannix

The Maryland Room at C. Burr Artz Library

Shea-Mikal Green, Shayden Jamison, Andrea Baker,

Genè Fouchè, Tad Janes, Julie Herber, Kerr Lockhart,

Melynda Burdette Wintrol, Thomas Majarov, Eric Rhodes

Poem by Kiki Wilson

Original music generously provided by Justine Hall

Additional Writing by Kiki Wilson & Cast

Story Circle Participants & Facilitators

Faye Page, Bonnie Swann, Rose Chaney, Gerald Palm, Will J. Majpme,

Natalie Brown, Phyllis Weeden, Quankeiair Scott, Jackie Brown,

Lola Williams, Barbara Thompson, Bonnie Sanders, Linda Shern,

Frank Saunders, Lisa Gray, Charles “Skip” Stanton, Seaven Gordon,

Denise Rollins from Whole Heart Center, Kiki Wilson, Wendell

Poindexter, Derek Gee from Maryland House

Community Conversations

Moderator: Kiki Wilson

Panelists: Rose Chaney, Michelle Wright, Mary Mannix,

Jake Wynn - Public Historian, Shana Knight, Jackie Douge, Dee Jenkins,

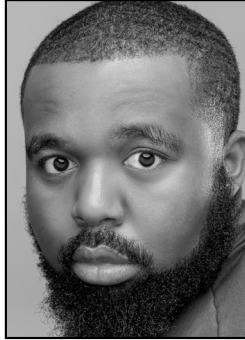
Coach Owens, Rebecca DeSantis-Randall, and more

Much gratitude for the Story Circle technique developed by John O'Neill of the Free Southern Theater and Junebug Productions. We hope that we have acknowledged everyone who participated in this process. If we have inadvertently omitted a name, please let us know so that we can acknowledge them.

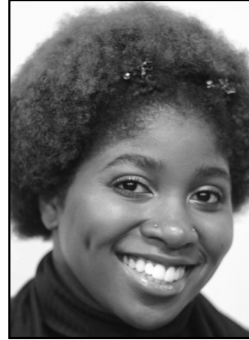
WHO'S WHO



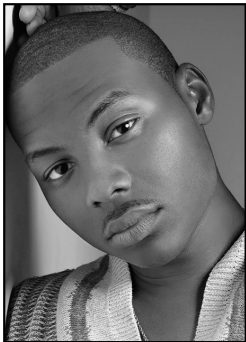
Gifty Amponsem



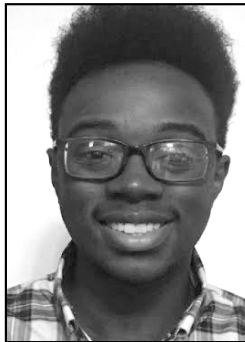
Evan Carrington



Victoria Causey



Alonzo Cook



Marcus Kersey Jr.



Rona Mensah

WHO'S WHO

Gifty Amponsem is happy to make her MET debut with *South & Saints*. She took the stage most recently in Little Theatre of Alexandria's *Sister Act* and Rockville Little Theatre's *Stickfly*. She has performed with Sandy Spring Theatre Group in *Godspell* and Encore Theater Company in *Incognito* and has done staged readings with The Essential Theater and 1st Stage Theater. Gifty completed the Honors Acting Conservatory at The Theatre Lab in DC and is honored to share her passion for performance with you all.

Evan Carrington is From Baltimore, MD and blessed to be back at MET! Past credits: *Fences* (Milburn Stone Theatre), *Clay's Place: Inside My Blue Mind* (The AngelWing Project), *A Civil War Christmas* (Endangered Species Theatre), *Detroit '67* (Maryland Ensemble Theatre), *N* (The AngelWing Project), *On National Road* (Dramatic Adventure Theatre), and *A Raisin In The Sun* (Sterling Playmakers).

Victoria Causey was born in Frederick, MD. She graduated from Governor Thomas Johnson High School and this is her third show at MET. She has previously appeared in *Planet Claire* (TJ's ATS program production) and *A Christmas Carol*. She has attended Frederick Community College and also Marymount Manhattan. Victoria is very excited once again to be working with Maryland Ensemble Theatre!

Alonzo Cook (award-winning actor, model, & decorated soldier) began as an extra & stand-in for Tyler Perry Studios & Paramount Pictures. With Stanford University training; Zo booked leads in *Alcatraz: Art Behind Bars*; *Lord Why Can't I Do Right?* (toured); The Little Theatre of Alexandria's *Sister Act: The Musical*; and more. Zo's a brand ambassador for Oxford Way Tailoring & Ghostfit fitness apparel, and this is his debut at MET. Instagram & Twitter: @Royal_Zo.

Marcus Kersey Jr. is excited to be making his acting debut at MET. Previously he played football and ran track in high school. As a senior, he began his theater career on TJ Stage's *Sister Act*, playing as Ernie and ensemble. He has a film credit on the mini TV series "The Clowns."

Rona Mensah has been a long-standing Board and Company Member of Maryland Ensemble Theatre. Her most recent MET acting credits include: *Detroit '67*, *Sweat, Good People*, *Clybourne Park*, and *The Santaland Diaries*. She's been part of some original MET productions; *Finally Heard... Skin Deep*, *Planet Claire...*, *Democracy*, *Something Brilliant...*, and *Exuviae*. When not onstage, Rona can be heard on the airwaves of Today's 97.5 in Martinsburg, WV as Host of "Rise & Shine with Rona". Cheers to live theater!

WHERE FASHION MEETS ART

*Alicia L
Boutique*

(301) 662-2722

Located in
Downtown Frederick
149 N Market St
AliciaL.com

 aliciaLboutique

 aliciaLfrederick



THE
**PERFECT
BLEND**
★ CAFE ★

Mon - Fri: 7am - 4pm
Sat: 8am - 3pm
Sunday: Closed

31 West Patrick St.,
Frederick, MD
(301) 662-8020
thepperfectblendfrederick.com



PREPARE FOR THE GREAT OUTDOORS.

HIKING BACKPACKING CAMPING ROCKCLIMBING X-COUNTRYSKIING

17 South Market Street Downtown Frederick

the
**TRAIL
HOUSE**

301.694.8448 trailhouse.com

WHO'S WHO

Lori Boyd (Props Designer) credits with MET include *The Ultimate Christmas Story*, *Detroit 67*, and *Angels in America: Millennium Approaches*. Lori completed most of her pre-pandemic credits propping, costuming, writing, and performing with Best Medicine Rep. She also has film and television experience.

Gené Fouché (Devising Leader) is a founder of MET where she serves as Associate Artistic Director and Marketing. Other MET directing credits include: *The Revolutionists*, *Sweat*, *The 39 Steps*, *Killer Joe*, *Something Brilliant Will Come to Us*, *Skin Deep*, *The 25th Annual...Spelling Bee* among others. Regionally she has directed for Landless Theatre, Fun Company, McDaniel College and Tell Baby Productions. Gené is Chair of Theatre Arts at McDaniel College.

Shea-Mikal Green (Devising Leader) holds an MFA in Devised Performance and Movement from Pig Iron School / University of the Arts in Philadelphia. A company member at MET, performer, creator, and director, Green was awarded an artist residency at Cow House Studios in Ireland and at The Iron Factory in Philly to create original devised works. Previous MET credits include *Angels in America: Millennium Approaches*, *Meteor Shower*, *Bad Jews*, *The Importance of Being Earnest*, *One Man, Two Guvnors*, *Bloody Bloody Andrew Jackson*, *Clybourne Park*. www.shea-mikalgreen.com

Ray Hatch (Director) a MET company member since May of 2020, has been in theatre arts & dance for 50 years as a director, choreographer, actor, singer, dancer, performance coach & youth instructor. MET directorial credits include *Circle Mirror Transformation*, *Three Little Birds & Detroit '67*. Other directorial credits in Frederick include *Arsenic & Old Lace* at Other Voices Theatre.

Julie Herber (Devising Leader) is Associate Artistic Director of the Maryland Ensemble Theatre and Artistic Director of The Fun Company. She has appeared in, directed, and choreographed countless productions, throughout the mid-atlantic region. Julie is a Teaching Artist for The Ensemble School and also teaches Theatre/Acting & Musical Theatre Dance Styles at Frederick Community College and McDaniel College. MET Directing credits include: *Let the Right One In*, 1984, *The Elephant Man*, *Peter & the Starcatcher* and *Frankenstein*.

Shayden Jamison (Stage Manager) is a MET Ensemble member with a B.S. in Theatre Arts from Towson University. Past MET stage management credits include: *Junie B. Jones: Jingle Bells*, *Batman Smells*, *The Rainbow Fish Musical*, *Inebriated History (2022)*, *Meteor Shower*, *Three Little Birds*, and *Midsummer: A Most Rare Vision*.

Tad Janes (Devising Leader) is the Founding Producing Artistic Director of MET and Theatre Program Manager



FREDERICK COUNTY LANDMARKS FOUNDATION promotes the preservation of historic sites, structures, ... and natural landmarks of Frederick County.

SCHIFFERSTADT ARCHITECTURAL MUSEUM
A National Historic Landmark since 2017

Docent-led tours of the oldest documented house in the City of Frederick (1758). FCLF also owns the Beatty-Cramer House (1748) and Zion Church (1802).

BARNSTORMERS
June 17

"The Barns of Utica" tour
 & plein air paint out

OKTOBERFEST
October 21 & 22

Annual Oktoberfest at
 Schifferstadt

1110 Rosemont Avenue, Frederick MD 21701
fredericklandmarks.org | info@fredericklandmarks.org



ONE WEEK SESSIONS
DURING JUNE & JULY

RESERVE
YOUR
PLACE THIS
SUMMER:



www.marylandensemble.org/education

STATION
 BY SPENCER
 PHOTOGRAPHS

PHOTO BOOTH

240.529.3738 INFO@SILLYSTATION.COM

#sillystation SILLYSTATION.COM /sillystation

Eastside Liquors

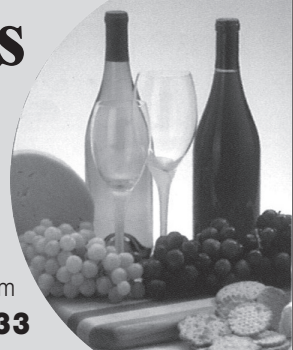
Great selections of Beer, Wines and Spirits
 We also sell Maryland Lottery, Keno, Racetrax

10% Off All Wine on Monday (except jug & bag in box)

15% Off Mixed Cases of All Wine (750 & 1.5)

Mon-Thu 10am-10pm • Fri & Sat 10am-11pm • Sunday 11am-9pm

507 N. East Street, Frederick • 301-663-3733



WHO'S WHO

at Frederick Community College. BFA from West Virginia University and Masters from the University of Kent in Canterbury and Goucher College. Directing credits include: MET: World Premieres: *Oediups Rox*, *Planet Claire*, *Pickle My Monkey*, *The Canterbury Tales*, *A Doll's House*, and *Democracy: A Work in Progress*. Other MET mainstage shows include: *Meteor Shower*, *Hand to God*, *The Complete works of William Shakespeare (Abridged) (2017)*, *Rocky Horror (2016)*, *One Man Two Guvnors*, *Good People*, *The Lieutenant of Inishmore*, *The Cripple of Inishman*, *End Days*, *The Pavilion*, *The Underpants*, *Reckless*, *Arms and the Man*, *The Big Slam*, *Durang/Durang*, and *Beyond Therapy*. Other: *Hand to God*, *Dead Man's Cell Phone* and *Buried Child* at McDaniel College, *Fool for Love* at Shepherd University where he also developed the student sketch comedy show *Teabaggin' My Coffee*.

Tom Majorov (Sound Designer) is a sound designer, actor, Comedy Pigs alumni and has been a MET company member since its founding. Tom began his sound design career while in high school designing for the Winchester Little Theatre in Winchester, VA. Having designed 2+ shows per season for MET his design credits are too numerous to list here, though some of his favorites are *Lysistrata*, "The Scottish Play", and *39 Steps*. Tom has also taken the MET stage as the Prince of Verona in *Romeo and Juliet*, King Duncan in "The Scottish Play", various roles in *Lysistrata*, Duke Orsino in *Twelfth*

Night, and the Doctor of Philosophy in *The Arsonists*.

Kim Parson (Assistant Stage Manager) is a junior at McDaniel College majoring in Theatre Arts (Lighting Design Emphasis) with a minor in Cinema. She's previously worked at MET on *Angels in America* as an electrician, and is super excited to be ASM/Light Board Op at MET for the very first time! Many thanks to Gené Fouché!


Wendell Poindexter (Scenic Design) Wendell Poindexter is a native of Frederick, MD. He received his Bachelor of Fine Arts in Illustration from the Maryland Institute College of Art and his Masters of Art Degree in Publication Design from the University of Baltimore. Wendell is a member of the art faculty at Frederick Community College where he is also the Manager of the Visual Art Program and manager of the Mary Condon Hodgson Art Gallery. Locally, Poindexter is former co-chair of the Public Art Commission for the City of Frederick and a former member and vice president of the Board of Directors for the Delaplaine Visual Arts Education Center. He has exhibited his works in numerous local galleries and presently he is a member of the jury team for the selection of the 7th street park public art sculpture in downtown Frederick.

Brandi Robinson (Costume Designer) is thrilled to costume design at MET and work with the theatre for the first time. She's worked on shows as a stage manager and booth technician in community theaters in Baltimore, MD.

I Made This!

10-B N. East Street Frederick, MD 21701
www.imadethispottery.com
 301-624-4030

Paint your own
Pottery Studio



Proud to Support the MET



FCB BANK

A Division of ACNB Bank

5 Convenient Locations to Serve You

Member FDIC



BENEFACOR

EVENTS

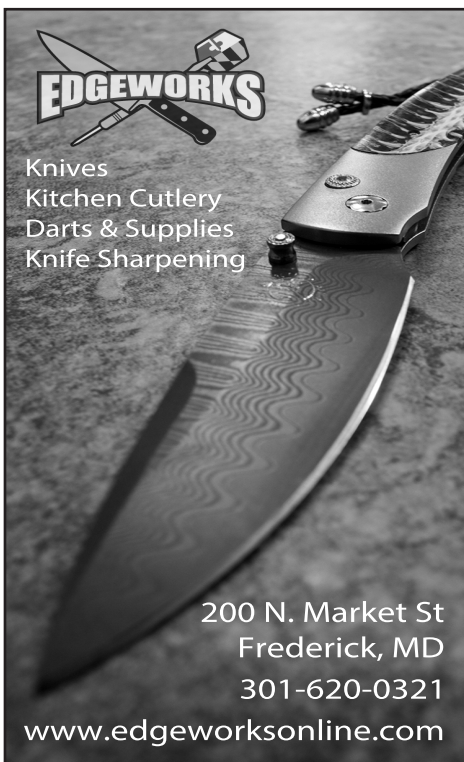
DJ'S - LIGHTING & SOUND - EVENT PRODUCTION

BENEFACOREVENTS.COM
JARAD@BENEFACOREVENTS.COM
 301-228-0983

 @BENEFACOREVENTSMSD  @BENEFACOREVENTS



Knives
 Kitchen Cutlery
 Darts & Supplies
 Knife Sharpening



200 N. Market St
 Frederick, MD
 301-620-0321

www.edgeworksonline.com

WHO'S WHO

Shows such as *Hoodoo Love*, *Captain Hook*, *Five women in the same dress*, *Mouse Trap*, *Shout*, and *A Christmas Carol*. Hope you all enjoy the show!

Rachel Smith (Costume Assistant) is a MET ensemble member. Recent costuming projects include *The Heidi Chronicles* at Hood College, *Hoodoo Love* at Spotlighters Theatre, and *Lifespan of a Fact* at MET.

Melynda Burdette Wintrol (Production Manager) a proud MET Ensemble member, holds a BM: Musical Theatre from CUA and a MS: Nonprofit and Association Management from UMD. Melynda has performed off Broadway, on tour and in regional theatres across the country. A member of three Helen Hayes nominated ensembles, she

has performed with the Tony award winning Signature Theatre, Studio Theatre, Olney Theatre Center, American Family Theatre, Washington Savoyards, Maryland Ensemble Theatre, Shawnee Playhouse, Prather Entertainment Group, Venus Theatre, Pallas Theatre Collective, Riverside Dinner Theatre and Toby's Dinner Theatre.

Tabetha White (Lighting Designer) is a company member at MET and the Arts Center Director at Frederick Community College with a BFA in Theatre Design and Technology from West Virginia University. Recent MET lighting design credits include *Radium Girls*, *Pride & Prejudice*, *The Arsonists*, *Oedipus Rox*, *Bad Jews*, *Top Girls*, and *Fred's Diner*.

MARYLAND ENSEMBLE THEATRE

You're Invited!

Season Preview

Join us for a
sneak peek at MET's

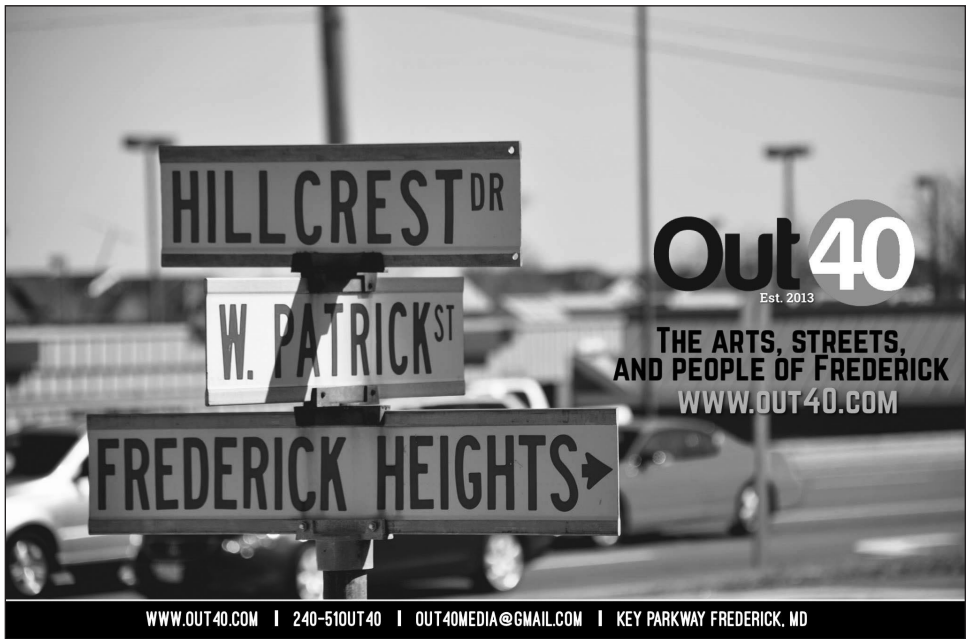
2023-2024 Mainstage Season

Steinhardt Brewery
Tuesday, June 27 • 7pm

340 East Patrick Street Suite 100-102, Frederick
Please RSVP by emailing abaker@marylandensemble.org

MET STAFF

Producing Artistic Director Tad Janes
Managing Director Katherine DuBois
Production Manager Melynda Burdette Wintrol
Associate Artistic Director/Marketing Gené Fouché
Associate Artistic Director/
Artistic Director of The Fun Company Julie Herber
Technical Director Cody James
Development and
Community Outreach Manager Andrea Baker
Audience Services Manager/
Education Manager Zack Callis
Special Events Coordinator Lorrie Lee



THE MET ENSEMBLE

This group of actors, directors, designers, stage managers, and theatre managers work daily to make MET a success!

Sean Byrne	Terbush	Rona Mensah	Emeritus:
Karli Cole	Julie Herber	Jeremy Myers	Lisa Burl
Stephen Craig	Cody James	Jennifer Pagano	Jeanine Evans
Steve Custer	Shayden Jamison	Molly Parchment	Joann Foltz
Jack Evans	Tad Janes	Katie Rattigan	Lorrie Lee
Gené Fouché	Lauren Johnson	Rachel Smith	Milee McDonald
AJ George-Wright	Eric Jones	Laura Stark	Mak Nichols
Shea-Mikal Green	Tom Majarov	Mallorie Stern	Ken Poisson
Doug Grove	Rachel Manu	Tori Weaver	Reiner Prochaska
Lydia Hadfield	James McGarvey	Tabetha White	Sarah Shulman
Matt Harris	Courtney	Melynda Burdette	
Ray Hatch-	McLaughlin	Wintrol	

BOARD OF TRUSTEES

Trish Southwell, Chair	Rona Mensah	Kathy Young
Marty Erlichman	Carol Topchik	Kiki Wilson
Tad Janes	Cody Weinberg	
Robin Jones	Tabetha White	

ASSOCIATE ARTISTS

Andrew Baughman	Karen Heyser-Paone	Kayte Williams
Matt Baughman	Brian Irons	Peter Wray
Suzanne Beal	Anne Raugh	Daniel Wyland
Ira Domser	Alison Shafer	
Julie Heifetz	Joe Williams	



AUSHERMAN
FAMILY FOUNDATION



**The Ausherman Family Foundation
has a long history of empowering
change in Frederick through
its support of the arts.**

We believe that performing arts are essential to the well-being of a community. Through our capacity building operational support, we are proud to have played a part in MET's growth from a small, grass-roots all volunteer organization to the thriving professional organization it is today.

AushermanFamilyFoundation.org

YOUR GIFT MATTERS!



Your gift makes theatre happen! Did you know that ticket sales cover only 40% of the expense of creating great theatre? Behind every great performance and education program offered by MET is the generosity of our wonderful donors. We truly could not undertake the scope of our work without you. MET is a 501(c)3 non-profit corporation and all donations are tax-deductible to the extent allowable by law:

There are many ways to give:

1. Make a gift of cash now by placing a donation in our donation box in the lobby, make a donation online at www.marylandensemble.org, or mail your check made payable to “Maryland Ensemble Theatre” to 31 W. Patrick Street, Frederick, MD 21701.
2. Make your gift go twice as far with a matching gift from your participating employer. Many businesses will match your charitable contribution.
3. Donate stock by contacting Development Manager Andrea Baker at 301-694-4744, ext. 702, for wire-fund transfer instructions.
4. Give the gift of gab! Word of mouth is one of the most powerful marketing tools. We also love online reviews — Facebook or tweet about your experiences to help spread the word.
5. Leave a bequest in your will. Simply identify Maryland Ensemble Theatre, Tax ID#52-1964330 and the amount or percentage you wish to contribute.

Thank you for all that you do to make Frederick an exciting and artistically diverse place in which to live!



**THEATRE
FCC**

**Acting • Directing • Improvisation
Introduction to Drama • Stage Craft**

301.846.2515 • frederick.edu/theatre

Frederick Community College prohibits discrimination against any person on the basis of age, ancestry, citizenship status, color, creed, ethnicity, gender identity and expression, genetic information, marital status, mental or physical disability, national origin, race, religious affiliation, sex, sexual orientation, or veteran status in its activities, admissions, educational programs, and employment. Frederick Community College makes every effort to accommodate individuals with disabilities for College-sponsored events and programs. If you have accommodation needs or questions, please call 301.846.2408. To request a sign language interpreter, please visit <http://fcc-interpreting.genbook.com>. If you have interpreting related questions, please email Interpreting@frederick.edu. Sign language interpreters will not be automatically provided for College-sponsored events without a request for services. To guarantee accommodations, requests must be made at least five workdays in advance of a scheduled event. If your request pertains to accessible transportation for a College-sponsored trip, please submit your request at least 21 calendar days in advance. Requests made less than 21 calendar days in advance may not be able to be guaranteed.

MET SPONSORS

Thanks to all our sponsors!

GOVERNMENT SUPPORT

Frederick Arts Council & The National Endowment for the Arts
Maryland State Arts Council
The City of Frederick
Frederick County Government
State of Maryland
SBA Disaster Grant
SBA Shuttered Venue Operator Grant
MD Maryland Strong Economic Recovery Initiative (SERI)

FOUNDATION SUPPORT

Aushman Family Foundation
Nora Roberts Foundation
Joseph D. Baker Fund
Delaplaine Foundation
Rotary Club of Carroll Creek Frederick
George L. Shields Foundation

CORPORATE SUPPORT (\$2,500+)

Bill Struever & Cross Street Partners
Eastside Liquors
Ellume
Key 103 & 106.9 The Eagle
Frederick Magazine
Frederick Coffee Company
FSK Apartments
Frederick News-Post
99.9 WFRE & 930 WFMD

MET FUNDS

The Frank Greene Fund for New Work
The Tom & Marg Mills Memorial Fund

MET CHAMPIONS

April 1, 2022 - April 24, 2023

MEMBERSHIP CIRCLE

DURANG'S DISCIPLES (\$10,000+)

Ausherman Family Trust	Frederick Arts Council	State of Maryland
Dr. Suzanne Beal	Frederick County Government	Maryland State Arts Council
Delaplaine Foundation, Inc.	Key 103.1 & 106.9 The Eagle	
The City of Frederick	OUT40 Media	

LETTS' LEAGUE (\$5,000+)

draeEvents	Sharon & Daniel Kuebbing	Kathy & Brian Young
Frederick News-Post	Nora Roberts Foundation	

O'NEILL'S OUTFIT (\$2,500+)

Constance Ahalt	Frederick Magazine	Rachel Schwartz & Luis Lorie
The Joseph D. Baker Fund, Inc.	Jim Hochadel	Rotary Club of Carroll Creek Frederick

SHEPARD'S SQUAD (\$1,000+)

John & Claudia Allemang	Steven Lenker & Magaly Lenker	Ray Hatch-Terbush & Ronald Terbush
Jack Day & Peter Brehm	Tom & Kate Majorov	Carol & John Topchik
A Sikh & A Greek	John & Meg Menke	Janet & John P. Wintrol
Dorothy Hutchinson	Dan Rice & Alison Shafer	
Lorrie Lee	Sievers Family	

PINTER'S POSSE (\$500+)

Jane & Rob Dallimore	Robin G. Jones	Tammie Workman & The Ausherman Family
Clyde R. & Betty K. Dismukes	Noma Laundry	Trust
Ira & Pat Domser	Susan Ferrara and David	Ronald N. Young & Karen Lewis Young
Downtown Frederick Partnership	Lawrence	
Keith & Rebecca Drzal	David & Vicki Lee	
Richard & Judith Harkins	Staci & Bill McLaughlan	
Teresa M. Haycraft	Mak Nichols	

BRECHT'S BUNCH (\$250+)

Sharon Adams	Martin & Marianne Erlichman	Erin & James McGarvey
Barbara Allen	The Hammel Family	Margaret M. McGrath
Chris & Sandi Arndt-Kohlway	Dottie & Mark Hamill	Greg & Nina Myers
Eric B. Berninghausen	Mary Herber	Ernest & Bernadette Naegele
Jeremy Myers & Levi Branson	Dave & Pat Herber	Walter Olson & Steve Pippin
Rich & Lori Cole	Beth Williams & Bob Herbertson	Brandon & Katie Rice
Comcast	Frank & Beverly Kristine	Dean & Robin Rose
Coca-Cola Consolidated	Andrew & Kirsten Lewis	United Way of Frederick County
Kara Norman & Thomas Delaney	Milee McDonald & Thomas Merchant McDonald	Kathryn & Benjamin Vicere

CHEKHOV'S CREW (\$100+)

Patton & Jacqueline Allen	Joseph P. & Jean E. Fitzgerald	Lee Ray
Richard Alperstein	Joann Foltz	Penny Rife
Tom & Jan Archibald	Quinn Fontaine	Julia & Jim Schaeffer
Dorinne & Richard Armstrong	Tad Janes & Genè Fouchè	Deborah Shumaker
Joseph & Karen F. Ashwal	Mark & Sara Gibson	Esta G. Sterneck
Karen & Mike Barnes	Ernell & Lemuel W. Graham	Shirley Stroup
Lori Beaudoin	Laura Stark &	Don Thompson &
Craig Bedard & Jen Blanton	Jon Harrington, Jr.	Diana Takata
Miriam Bolling	Del. Ken Kerr &	Marcy Taylor
Steve & Scottie Burdette	Dr. Helen Kerr	Deanna & Tom Troutman
Richard and Jill Cody	Carole M. Kirby	Nora Wade
Harry & Sharon Cole	George & Susan Ladue	Wegman's (Frederick)
Ken & Barbara Daniel	Pam Lilly	Susan Williamson
Robin Bell & Kim C. Dine	Barb Lofts	Elizabeth & John Willis
Doug Jones &	John & Mary E. Menke	Esther & Bob Ziegler
Robin Drummond	Rona Mensah	
Mary & Jack Eldred	George & Sandra Oxx	
Nancy Eller	Carole Lynne Price	
Giffi Family	Catherine Randazoo	

MET would like to extend special thanks to those contributing to our Take-A-Seat Campaign through in kind donations or other assistance.

Ronald N. Young &
Senator Karen Lewis Young
Doug Grove
Rick Jones Electric
Lighthouse Construction
Irwin Seating
Parlights Stage Lighting

Maryland Deaf Community Center
Sheild Co.
Nick Long at Main Event Trophies
Ovations Theatre
Sommer Glass Co.
Zavos Architecture + Design

To all of our patrons, we extend a heartfelt

THANK YOU!

Maryland Ensemble Theatre strives to recognize all of our donors. Please let us know if your name is missing or if there are any inaccuracies by contacting abaker@marylandensemble.org.

MET is a 501(c)3 non-profit, a professionally operated and an artistically accredited arts organization. A community and business partner, MET is an artistic and economic asset to Frederick County and plays a vital role in shaping the cultural character of our community.



THE ORIGINAL BOF
BEST OF FREDERICK

MET

2018-2023

BEST THEATER TROUPE / GROUP

Frederick
magazine





WEINBERG
CENTER FOR THE ARTS

COMING
SOON!



Afrique en Cirque



The Steel Wheels

BUY
TICKETS
TODAY!

WEINBERGCENTER.ORG | 301.600.2828

20 W PATRICK ST | FREDERICK, MD 21701

The Steel Wheels

SATURDAY, APRIL 1 | 8:00 PM

**Neil Berg's The 60's:
Peace, Love & Rock N' Roll**

FRIDAY, APRIL 21 | 8:00 PM

**Afrique en Cirque
by Cirque Kalabanté**

SUNDAY, APRIL 23 | 6:30 PM

...AND MANY MORE!

VISIT WEINBERGCENTER.ORG FOR A
COMPLETE LISTING OF EVENTS.



NEW
SPIRE
ARTS



Zach
Person

**COMING SOON
TO OUR NEWEST STAGE
AT NEW SPIRE ARTS!**

15 W PATRICK ST | FREDERICK, MD 21701

Thumbscrew

SATURDAY, APRIL 29 | 8:00 PM

TIVOLI DISCOVERY SERIES – PAY WHAT YOU WANT!

Zach Person

THURSDAY, MAY 4 | 7:30 PM

**Ladies Of Laughter:
Funny & Fabulous Tour**

FRIDAY, MAY 12 | 8:00 PM

contemporaryamericantheaterfestival
AT SHEPHERD UNIVERSITY

The Overview Effect

by Lynn Rosen



2023 SEASON: JULY 7 - 30

SHEPHERDSTOWN, WV

TICKETS START AT \$40 • CATF.ORG • 681-240-2283