





We are a professional, collaborative theatre ensemble broadly connected to our community by inspiring passion for the arts with courageous, relevant, accessible programs that enable people to feel more, think deeper, and laugh longer.

Through open communication and life long learning, MET's ensemble brings a commitment to excellence that helps shape our region by initiating creative dialogue between artists and audience; providing outreach to under served communities; and training, education, and professional development opportunities to students of theatre that will propagate MET artistic values into the American Theatre.

Since 1997, MET has created over fifty original plays including *Finally Heard*, *Skin Deep*, the musical *Planet Claire*, *Democracy a Work in Progress*, *Something Brilliant Will Come to Us*, *Exuviae*, *Pickle My Monkey*, *Oedipus Rox!*, *South & Saints*, a number of children's theatre plays including *The Rainforest Adventure*, *Cyranosa- the Story of a Girl and her Nose*, *Mother Goose on the Loose*, *The Star Stealer*, *Pirates of Pelican Point*, *Trolls*, and countless comedy sketches and original songs (including the Comedy Pigs parody song *Weiner Dog* which was seen on the national cable channel Comedy Central).

Head Over Heels Original Broadway Production produced by:

Christine Russell Louise Gund Donovan Leitch Rick Ferrari Gwyneth Paltrow
Scott Sigman Hunter Arnold Tom Kirdahy Jordan Roth

The World Premiere of "Head Over Heels" took place at Oregon Shakespeare Festival
Bill Rauch/Artistic Director; Cynthia Rider/Executive Director

Developed with the support of New York Stage and Film & Vassar's Powerhouse Theater,
Summer 2016

Head Over Heels is presented by special arrangement with
Broadway Licensing, LLC. (www.broadwaylicensing.com)

MET'S MAINSTAGE SEASON SPONSORS:



FREDERICK
MARYLAND



MARYLAND
STATE ARTS
COUNCIL



Maryland

SHUBERT
FOUNDATION INC.



The Frederick
News-Post



Additional
support:



Joseph D. Baker
FUND



The
George L. Shields
Foundation

The Carver
Foundation



This project is supported in part by Frederick Arts Council and the National Endowment for the Arts.



Songs by **The Go-Go's**
Based on 'The Arcadia' by **Sir Philip Sidney**
Conceived and Original Book by **Jeff Whitty**
Adapted by **James Magruder**

featuring

**Adian Chapman, Karli Cole, Kecia Deroly, Kiersten Gasemy,
Bryant Gutknecht, Ray Hatch, Eric Jones, Jennifer Pagano, Mallorie Stern,
Randy Stull, Danielle Tuomey, Jacob Waeyaert, Joseph Waeyaert,
Tori Weaver, Melynda Burdette**

Director
Gené Fouché

Music Director
Alison Shafer

Choreographer
Lena Janes

Stage Manager
Shayden Jamison

Set Designer
Shana Joslyn

Sound Designer
Tom Majorov

Co-Lighting Designers
Doug Grove & Tabettha White

Co-Costume Designers
Elizabeth Tringali & Judy Harkins

Props Designer
Lori Boyd

Intimacy Coordinator
Shea-Mikal Green

Fight Choreographer
Megan Behm

Assistant Stage Manager
Olivia Pietanza

Technical Director
Cody James



FREDERICK

MARYLAND

On behalf of The City of Frederick, welcome to Maryland Ensemble Theatre and to our Arts and Entertainment District.

We are proud to be home to this professional ensemble company. For over 25 years, MET has provided accessibility to high quality and thought-provoking theatre, helping ensure a diversity of opportunities for our community to experience visual and performing arts in Frederick.

Please use your interaction with MET as a catalyst to further explore the many entertainment, shopping, and dining options available in Frederick.

Enjoy the show!

Michael O'Connor
Mayor, City of Frederick

VALLEY GRAPHIC SERVICE, INC.

is proud to support

Maryland Ensemble Theatre

Valley Graphic Service strives on being a *trusted and experienced* full service, in-house commercial printing company. Our reputation comes from the knowledgeable, dedicated and loyal family of employees. For over 30 years we have served a loyal base of satisfied customers locally and nationwide.

Choose Valley Graphic Service, we promise you will feel confident with your printing experience.

Call or email one of our experts today.

**Because There's
More to Printing,
Than Ink On Paper**



VALLEY GRAPHIC SERVICE, INC.

93 Monocacy Blvd., Suite A-1
Frederick, Maryland 21701
301.694.8825 • 800.649.8825
sales@valleygs.com

FROM MET'S ARTISTIC DIRECTOR



The final production of Season 26! Wow! We're so excited to be bringing this new-ish musical to Frederick. It's fun, thought provoking, and, if you've been with us all season, you know it's NOTHING like the previous shows. This season has been the very definition of "eclectic" and we LOVE that challenge.

At MET, we love to explore new territory and explore new forms. Next season is sure to keep that eclectic ball rolling as we announce Season 27 on June 18th! This summer we'll be producing two different plays that feature Frederick area youth in productions, many summer classes with The Fun Camp, and even some improv workshops. So if you'd like to test the waters of an improv class, maybe there's a workshop this summer you'd like to attend!

In the fall, we promise to come back with a set of five GREAT plays with a few add-on surprises. The Fun Company stage will be back with a great series of pieces for the whole audience. And, every Friday night starting in September, we'll be back with Comedy Night featuring a number of great improv troupes.

As artists we love getting to play, build, create, produce, present, and impact our audiences with our work. We are so fortunate to have an audience that continues to join us for this amazing journey of the most interesting work America has to offer and also allows our artists to create impactful work.

Thank you, so much, for supporting live theatre in Frederick – it's such a great town!

Tad Janes

Producing Artistic Director

SPEAKING OF SEASON PREVIEW

Party with us at Steinhardt
Brewing on JUNE 18 as we
announce our next season!

Get your
FREE ticket



contemporaryamericantheaterfestival

AT SHEPHERD UNIVERSITY



JULY 5-28, 2024

**BOLD.
NEW.
THEATER.**

SHEPHERDSTOWN, WEST VIRGINIA

CATF.ORG

FROM THE DIRECTOR



I'll let you in on a secret: *Vacation*, by the Go Gos was one of the first albums I acquired for myself as a preteen. I knew every word, note and riff on the album. I was a GenX 80s child and teenager - the bright Benetton colors, Jessica McClintock prom dresses, Commander Salamander, and, yes...BIG HAIR!

Head Over Heels was originally adapted from *The Countess of Pembroke's Arcadia* (known more commonly as *The Arcadia*), a long form pastoral romance written by Sir

Phillip Sidney in the 16th century. After some conflict between the original creative team, however, the final result is loosely based on the original, and premiered on Broadway for a brief run in 2018.

Head Over Heels is a modern fairy tale with themes of inclusivity, acceptance and adapting to change. The original design for the show leaned into the fairy tale and pastoral aspects of the script and created a world that reflected that with 80s music layered on top to help tell the story. Beyond remembering the music from that time (for those of us who lived it) it felt as if it was missing an opportunity for nostalgic connection. When scenic artist, Shana Joslyn, showed me her original drawings for the set, we started to imagine a world that was steeped in the 80s, yet still honored the fairy tale aspect of the script.

If you have fun this evening, please spread the word – we aren't a company that chooses the most well-known shows. We like to bring you gems that wouldn't otherwise be brought to Frederick. And if you are a GenXer – see how many Easter eggs you can catch along the way!

Gené Fouché
Director

MUSICAL NUMBERS

ACT I

We Got the Beat	Company
Beautiful.....	Pamela, Ensemble
Vision of Nowness.....	Pythio, Ensemble
Get Up and Go.....	Basilius, Company
Mad About You	Musidorus, Male Ensemble
Good Girl	Philoclea, Mopsa, Pamela
Vision of Nowness/Beautiful (Reprise).....	Musidorus, Pythio, Female Ensemble
Automatic Rainy Day	Pamela, Mopsa
Cool Jerk	Company
Vacation	Mopsa, Female Ensemble
How Much More.....	Pamela
Our Lips Are Sealed	Musidorus, Philoclea, Pamela, Mopsa, Pythio, Ensemble

There will be one 10 minute intermission

ACT II

Head Over Heels.....	Musidorus, Philoclea, Mopsa, Pamela, Company
This Old Feeling	Gynecia, Basilius
Turn to You.....	Mopsa, Pamela, Ensemble
Heaven Is a Place on Earth.....	Pythio, Gynecia, Basilius, Ensemble
Lust to Love.....	Basilius, Ensemble
Here You Are.....	Philoclea, Company
Mad About You (Reprise)	Company
Finale.....	Company

BAND

Alison Shafer [^]	Conductor/Keys
Kaydin Hamby*	Guitar
Andy Wright	Guitar
James Meech.....	Drums
Laura Walling (Shawn Dennison 6/22).....	Bass

CAST OF CHARACTERS

Basilus.....	Adian Chapman
Dametas.....	Ray Hatch*
Musidorus	Joseph Waeyaert*
Pythio	Eric Jones*
Philoclea.....	Karli Cole*
Gynecia	Kecia Deroly
Pamela.....	Tori Weaver*
Mopsa.....	Mallorie Stern*
Ensemble.....	Kiersten Gasemy, Bryant Gutknecht, Jennifer Pagano*, Randy Stull, Danielle Tuomey, Jacob Waeyaert
Understudies/Swings.....	Musidorus: Bryant Gutknecht, Pythio/Basilus: Randy Stull, Female Swing: Jennifer Pagano*, Dametas: Jacob Waeyaert, Gynecia: Melynda Burdette*

PRODUCTION TEAM

Gené Fouche*	Director
Alison Shafer^	Music Director
Lena Janes.....	Choreographer
Maurlea Long ⁺	Directing/Choreography Apprentice
Shayden Jamison*	Stage Manager
Olivia Pietanza*	Assistant Stage Manager
Shana Joslyn	Set Designer
Doug Grove*, Tabetha White*	Co- Lighting Designers
Tom Majorov*	Sound Designer
Elizabeth Tringali, Judy Harkins	Co-Costume Designers
Lori Boyd*	Props Designer
Shea-Mikal Green*	Intimacy Choreographer
Megan Behm.....	Fight Choreographer
Maddie Mobley.....	Deck Crew
Cody James*	Technical Director

*Denotes MET Ensemble Member +Denotes MET Apprentice

^Denotes Associate Artist

WHO'S WHO



Adian Chapman



Karli Cole



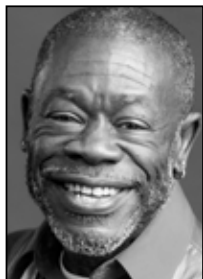
Kecia Deroly



Kiersten Gasemy



Bryant Gutknecht



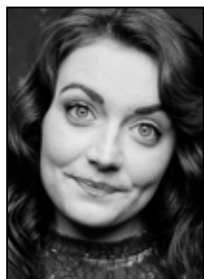
Ray Hatch



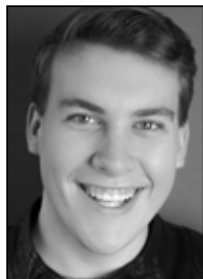
Eric Jones



Jennifer Pagano



Mallorie Stern



Randy Stull



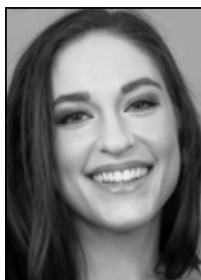
Danielle Tuomey



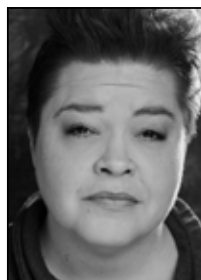
Jacob Waeyaert



Joseph Waeyaert



Tori Weaver



Melynda Burdette

WHO'S WHO

Adian Chapman (Basilius) is ecstatic to be making his MET debut as Basilius. Adian is a professional actor, writer, director, fight choreographer. His most recent professional acting credits are *The Who's Tommy* at Workhouse Arts Center, *Footloose* at Landless Theatre, *Tender* at Transformation Theatre, *Murder on the Orient Express* at Cumberland Theatre. Up next for him will be *Tall Woman* at Southern Appalachian Repertory Theatre in July, and directing *Urinetown* at Ovations's Theatre in August. Thank you for supporting live theatre, and he hopes you will enjoy the show!

Karli Cole (Philoclea) is a proud MET teaching artist, and company member. Previous MET credits include: *Mainstage: Curse of the Starving Class*, *Let the Right One In*, *A View from the Bridge*, *The Pillowman*, *CraftTown*, *The Rocky Horror Show*. Fun Company: *Elephant and Piggie's We Are in a Play*, *Rainbow Fish*, *Giggle Giggle Quack*, *Junie B. in Jingle Bells*, *Batman Smells!*, *Goodnight Moon*, and many more. In 2016 she graduated with a BFA in Physical Theatre from Coastal Carolina University.

Kecia Deroly (Gynecia) is excited to return to MET for this production of *Head Over Heels*. A transplant to Maryland, she's performed professionally all over the world since the age of 8 starring in her first Off- Broadway production of *The Yoke*. A theater veteran, some of her major roles include: *Intimate Apparel* (MET), *Fiddler on the Roof*, *A Chorus Line*, *Rocky Horror Picture*

Show, *Man of La Mancha*, *State Fair*, *Sound of Music*, *Joseph and the Amazing Technicolor Dreamcoat*, *Showboat*, *AIDA*, and *Dreamgirls*. Special thank to her husband Luke and her beautiful daughter Aria for their enthusiastic and loving support.

Kiersten Gasemy (Ensemble) is thrilled to be making her MET debut! She is an alumna of Point Park University and Broadway Dance Center's Professional Semester, where she studied dance and musical theater. Recent performance credits include *The Wizard of Oz*, *Twas' the Night Before Christmas*, *Escape to Margaritaville* and *The Prom*. Recent choreography credits include *Urinetown* (McDaniel College), *Evil Dead* (CT), and *Curtains* (OOH). She is grateful to have worked alongside this incredible cast and production team and, would like to thank her friends, family, Sean, and mentors for their constant love and support.

Bryant Gutknecht (Ensemble, U/S Musidorus) is excited to be performing with such an incredibly talented group. Graduating from McDaniel College with a BA in Theatre Arts in 2023, past credits at MET include *Dragons Love Tacos* (Blue Dragon) with MET's Fun Company, and *Sherlock! The Musical* (Sherlock) in MET's Summer Program. Enjoy the show!

Ray Hatch (Dametas) has been in theatre & dance for over 50 years as an actor, singer, dancer, choreographer, teacher & performance coach.

VOLUNTEER!

Volunteer your services as an usher or concessions assistant and see MET's shows for free.

Email contact@marylandensemble.org



THOUGHTFUL, CONTEMPORARY, CREATIVE.



GENERATION MEDIA

Visit us:



GenerationMediaLLC.com



Multiple Emmy® & Telly® award winning video content.

STATION
BY STATION
PHOTOGRAPHS



PHOTO BOOTH★

STATION

240.529.3738 INFO@SILLYSTATION.COM

#sillystation

SILLYSTATION.COM

/sillystation

WHO'S WHO

MET onstage credits include *Gift of the Magi* (Soapy), *Canterbury Tales*, *Sweat* (Bruce), *The Tempest* (Ariel), *The Legend of Georgia McBride* (Tracy), *Angels In America: Millennium Approaches & Angels In America; Part II - Perestroika* (Belize). Directorial credits include *Circle Mirror Transformation*, *Three Little Birds*, *Detroit '67 & South & Saints*. He was Hoke in *Driving Miss Daisy* & directed *Arsenic & Old Lace* at Other Voices Theatre.

Eric Jones (Pythio) MET: *Angels in America* (Louis), *The Legend of Georgia McBride* (Rexy/Jason), *The Rocky Horror Show* (Frank-N-Furter), *Oedipus Rex!* (Creon), *A Clockwork Orange* (Minister of the Interior). OVT: *The Secret Garden* (Dr. Craven), *Jesus Christ Superstar* (Jesus), *Avenue Q* (Princeton), *Driving Miss Daisy* (Boolie). RMT: *Dogfight* (Birdlace). FTP: *Pippin* (Fastrada). Proud MET company member and Comedy Pig. Thanks to Gené, Alison, Lena, the entire cast and crew, and YOU for supporting live theatre!

Jennifer Pagano (Ensemble, Female Swing) graduated from Coastal Carolina University with a BFA in Musical Theatre. She is a proud MET company member. Most recently seen as Marie Antoinette in *The Revolutionists*, Corky in *Meteor Shower*, and Starfish in *Rainbow Fish the Musical!*

Mallorie Stern (Mopsa) is a proud MET company member. MET credits: *Elephant & Piggie: We Are in A Play!*, *Inebriated Holiday*,

CraftTown, *Miss Bennet: Christmas at Pemberley*, *The Rainbow Fish Musical*, *Meteor Shower*, *The Rocky Horror Show*. Recent regional credits: *The Honey Trap* (World Premiere) at Solas Nua, *Mr. Popper's Penguins* at Imagination Stage. B.A. in Musical Theatre and Public Relations & Strategic Communication from American University. Upcoming: *Miss Nelson Is Missing!* at Imagination Stage.

Randy Stull (Ensemble, U/S Pythio/Basilus) is so excited to be back on the MET stage! He holds a BFA in Musical Theatre from Catawba College. He has toured with ArtsPower National Touring Theatre and performed in Vocally Aligned, a jazz quartet with Jullian Records in NYC. He has guest starred on two episodes of *Evil Lives Here* on the ID channel. His last musical role at MET was *The SQUIP* in *Be More Chill* (Summer Series). He hopes you enjoy the show!

Danielle Tuomey (Ensemble) MET debut! Danielle holds a BFA in dance from Mercyhurst University. Performance: *Toby's Dinner Theatre*; *A Chorus Line*. Mercyhurst; *Savage Birds* (chor. Sidra Bell), *Swan Lake* (pas de trois), *Nutcracker* (Marzipan Lead, Russian). Other Voices Theatre; *The Wizard of Oz*, *The New Adventures of Alice in Wonderland* (Alice), *Jesus Christ Superstar*. Choreography: Other Voices Theatre: *The Prom*. Danielle is thankful for her family, friends, castmates, and the production team for their support! IG: @danielle_



**Acting • Directing • Improvisation
Introduction to Drama • Stagecraft**

301.846.2515 • frederick.edu/theatre

WHO'S WHO

says_hi, website: danielletuomey.wixsite.com/danielletuomey.

Jacob Waeyaert (Ensemble, U/S Dametas) is making his debut on the MET stage. He is known for portraying a wide variety of roles in both stage and film including Inspector Kemp in Mel Brooks' *Young Frankenstein* (Washington County Playhouse), D'Artagnan in *The Three Musketeers* (MEG Theatre), Wes in *Project Eerie* (Amazon Prime), and Banquo in Shakespeare's *Macbeth* (MEG Theatre). He is also a script writer and director with original works including *Victim* (shortfilm, writer/director), *We Knights Three* (stage, writer), and *Lamentum* (shortfilm, writer). Recently, he directed, fight choreographed, and dance choreographed Shakespeare's *Romeo and Juliet* (MEG Theatre).

Joseph Waeyaert (Musidorus) is excited to be a part of this amazing cast! Joe has been a company member at MET for almost a year, and has been active on and off stage (in both Mainstage and Fun Company) for several productions this season. Most recently, you may have seen him as Mr. Marks in *Intimate Apparel* (Mainstage), and as Boy/ensemble in *The Borrowers* (Fun Company). Enjoy the show!

Tori Weaver (Pamela) is a MET company member and graduate of AMDA in NYC. So excited to cross a dream role off the list playing Pamela! MET credits: *Angels in America Parts 1 and 2*, *Intimate Apparel*, *Miss Bennett: Christmas*

at Pemberley, *Pride and Prejudice*. Favorite regional credits include Tammy in *Escape to Margaritaville*, Rosa Bud in *The Mystery of Edwin Drood*, Lady of the Lake in *Spamalot*, and Baker's Wife in *Into the Woods*.

Melynda Burdette (U/S Gynecia) A MET company member, credits include: MET: *Urinetown, the Musical*; Cumberland Theatre: *Jesus Christ Superstar, Legally Blonde*. OFF BROADWAY: *You're It, an Interactive Musical*. REGIONAL: Shawnee Playhouse: *Carousel, It's a Wonderful Life*; Signature Theatre: *Sweeney Todd, Kiss of the Spider Woman*; Studio Theatre: *Jerry Springer, the Opera*; Olney Theatre Center: *The Sound of Music*; Toby's Dinner Theatre: *Ragtime, Titanic, Jekyll and Hyde, Sweeney Todd, Fiddler on the Roof*; Riverside Center: *Phantom, Les Miserables, Sister Act*; Workhouse Arts Center: *The Full Monty*; Pallas Theatre Collective: *Crazy Mary Lincoln*. EDUCATION: CUA: BM: Musical Theatre, UMD: MS: Nonprofit Management.

Megan Behm (Fight Choreographer) is happy to be back at MET after being the intimacy choreographer on *The Squirrels*. Other fight choreography credits include *Bad Dog* (Olney Theatre Center); *Moth* (Studio Theatre); *The Good Counselor* and *columbinus* (1st Stage); and *A Delicate Ship* (4615 Theatre Company). Megan is an Advanced Actor Combatant with the SAFD. www.megan-behm.com

Register Now for the BEST Summer Camp - ages 7-16!

A summer of FUN like no other!

- One week long sessions
- A safe, secure, and climate-controlled environment
- Camps such as: Musical Theatre, Music Video Magic, Costume Design, and Improv/Comedy Jam
- Limited availability!

View the
up-to-date
camp schedule



NEW sessions added!



**THE
PERFECT
BLEND
★ CAFE ★**

Mon - Fri: 7am - 4pm
Sat: 8am - 3pm
Sunday: Closed

31 West Patrick St.,
Frederick, MD
(301) 662-8020

thepureblendfrederick.com



WHO'S WHO

Lori Boyd (Props Designer) (Company Member) credits with MET include *The Ultimate Christmas Story*, *Detroit 67*, *Angels in America: Millennium Approaches*, *South and Saints*, *Angels in America: Perestroika*, *Inebriated Holiday*, *Intimate Apparel*, *The Squirrels*, and *Head Over Heels*. Best Medicine Repertory Theater credits (both on and behind the scenes) include *The Crater Sisters' Christmas Musical*: co-wrote, directed, propped, and appeared in, and *The Texas Homecoming Revolution of 1995*: costume/props. Film and television credits include *The Jester*: Cinematic Productions: Production Designer, *A Very Stinky Summer*: Cinematic Productions, Art Dept. Co-director, and *American Titans*: Wilma Television/Discovery Studios, Art Dept.

Gené Fouché (Director) is an Associate Artistic Director and company member with MET, but also contributes as a graphic designer for Mainstage productions. MET directing credits include: *The Lifespan of a Fact*, *The Revolutionists*, *Sweat*, *Superior Donuts*, *The 39 Steps*, *Killer Joe*, *Something Brilliant Will Come to Us*, *Skin Deep*, *The 25th Annual...Spelling Bee*, *Family Holiday*, *The 5th of July* among others. Regionally she has directed for Landless Theatre, Fun Company, McDaniel College and Tell Baby Productions. Gené is the department chair of Theatre Arts at McDaniel College.

Shea-Mikal Green (Intimacy Choreographer) holds an MFA in Devised Performance and Movement

from Pig Iron School / University of the Arts in Philadelphia. A company member at MET, actor, deviser/creator, and director, Green was awarded an artist residency at Cow House Studios in Ireland and at The Iron Factory in Philly to create original devised works. Previous MET credits include *The Borrowers* (Fun Company Deviser / Director / Sound Designer), *The Squirrels*, *Angels in America: Part One Millennium Approaches* and *Part Two Perestroika*, *Meteor Shower*, *Bad Jews*, *The Importance of Being Earnest*, *One Man, Two Guvnors*, *Bloody Bloody Andrew Jackson*, *Clybourne Park* (Mainstage). www.shea-mikalgreen.com

Doug Grove (Co-Lighting Designer) is a designer, technician, and problem solver who has done lighting, sound, video, scenic, props, special effects, technical direction, production management, and stage management for companies across Maryland including MEG Theatre, Chesapeake Shakespeare Company, Hood College Theatre, Landless Theatre Company, and Maryland Ensemble Theatre where he is a company member. He is a service technician for Parlights providing archtainment lighting controls throughout the country. He is a member of the United States Institute for Theatre Technology and the Frederick Arts Council. Website: dgtheatre.tech

Judy Harkins (Co-Costume Designer) is back for her third show costuming for MET, partnering with Libby Tringali. Previous credits

THE DELAPLAINE *arts* CENTER

Everyone
Deserves
Art

The Delaplaine is located in historic downtown Frederick along beautiful Carroll Creek Park. Come and explore:

SEVEN ART GALLERIES

Showcasing 50+ exhibits by regional and national artists each year

EIGHT SPACIOUS STUDIOS

Housing 250+ classes, workshops, and summer camps each year for all ages and skill levels

THE ETCHISON-DAVIS LIBRARY

One of the largest free & public art reference libraries in Maryland

MONTHLY PROGRAMS & SPECIAL EVENTS

Artist Talks, Free Workshops for Kids, Annual Gala, and more



40 S Carroll St • Frederick, MD | 301.698.0656

delaplaine.org

Open Daily | FREE ADMISSION

WHO'S WHO

include *Pride and Prejudice*, and *Miss Bennett: Christmas at Pemberley*.

Cody James (Technical Director) is a theatre maker specializing in writing, directing and designing engaging theatre experiences with groups local to Western Maryland and Eastern West Virginia. Cody received their MA in Drama and Theatre Studies at NUI Galway in 2020 and is the full time Technical Director and company member at Maryland Ensemble Theatre. Cody is also a founding member of Red Hill Theatre Group.

Shayden Jamison (Stage Manager) is a MET company member with a B.S. in Theatre Arts from Towson University. Past MET Mainstage and Fun Company stage management credits include: *Elephant & Piggie: We're in a Play!*, *Inebriated Holiday*, *Angels in America Part 2: Perestroika*, *South & Saints*, *Junie B. Jones: Jingle Bells*, *Batman Smells*, *The Rainbow Fish Musical*, *Inebriated History* (2022), *Meteor Shower*, *Three Little Birds*, and *Midsummer: A Most Rare Vision*.

Lena Janes (Choreographer) (she/her) is a choreographer, dancer, and actor based in Chicago, IL. She holds a BFA in Physical Theatre from Coastal Carolina University. Recent choreography/creative directing credits include: *Filthy Gorgeous Fashion Show* (The Den Theatre), *Planet Claire*, *Be More Chill*, *Carrie the Musical*, *Heathers* (MET Summer Series), *Dance Nation*, *Steel Pier* (CCU). Stream *The Jester* now on Apple TV! Insta: @lena_janes13. www.lenajanes.com

Shana Joslyn (Set Designer) is the assistant professor of theatre design and technology at McDaniel College. She has been designing scenery, lighting, sound, and video for over 20 years. Along with theatre, she has designed opera, dance, and national acts such as Eddie Money, Anthrax, Mary Wilson, and Nazareth. Some of her most memorable designs are *The Importance of Being Earnest*, *Silent Sky*, *Urinetown*, and *The Vibrator Play*.

Maurlea Long (Directing & Choreography Apprentice) is a senior at Middletown High School. She has attended the Academy For The Fine Arts for three years, where she participates in the Musical Theater focus. Some of Maurlea's notable roles include Brenda Strong in *Catch Me If You Can*, Ariel in *The Little Mermaid*, and Lorraine in *All Shook Up*. She is excited to say that she will be attending college as a theater major in the fall!

Tom Majarov (Sound Designer) is a sound and projection Designer, actor, Comedy Pigs alum and has been a MET company member since its founding. Tom began his sound design career while in high school designing for the Winchester Little Theatre in Winchester, VA. Having designed 2+ shows per season for MET his design credits are too numerous to list here, though some of his favorites are *Lysistrata*, "The Scottish Play", and *Let the Right One In*. Tom has also taken the MET stage as the Prince of Verona in *Romeo and Juliet*, King Duncan in "The Scottish Play", Duke Orsino

**Are you ready for
an *adventure*?**



**ADVENTURE
THEATRE**
& ATMTAC ACADEMY
SEE THEATRE. BE THEATRE.

**You're A Good Man,
Charlie Brown**
Sept 21- Oct 29

**The Lion, The Witch and the
Wardrobe**
November 17, 2023 – January 7, 2024

Junie B. Jones, The Musical
February 2 – March 30, 2024

**Sing Down The Moon:
Appalachian Wonder Tales**
April 26 – May 26, 2024

**Knuffle Bunny: A
Cautionary Tale**
June 21 – August 19, 2024



PREPARE FOR THE GREAT OUTDOORS.

HIKING BACKPACKING CAMPING ROCKCLIMBING X-COUNTRYSKIING



17 South Market Street Downtown Frederick

the **TRAIL
HOUSE**

301.694.8448 trailhouse.com

Proud to Support the MET



ACNB BANK

26 Convenient Locations to Serve You

Member FDIC

in *Twelfth Night*, the Doctor of Philosophy in *The Arsonists*, and Doctor Soren in *Stupid Fucking Bird*.

Olivia Pietanza (Assistant Stage Manager) is a proud company member and has been with MET for almost 3 seasons now. Previous MET credits include *Three Little Birds*, *Detroit '67*, *Lifespan of a Fact*, *The Legend of Georgia McBride*, *Angels in America: Part One Millennium Approaches* and *Part Two Perestroika*. She has most recently Stage Managed MET's Mainstage production of *The Squirrels*. She hopes you feel the beat and enjoy *Head Over Heels*!

Alison Shafer (Musical Director/ Conductor) has worked in area theatres throughout Maryland and West Virginia for over forty years. Her previous MET credits: *Rocky Horror*, *Urinetown*, *Bloody Bloody Andrew Jackson*, *The Wild Party (Lippa)*, *Company*, *The 25th Annual Putnam County Spelling Bee*, *The Threepenny Opera*, *the World Goes 'Round*, and *Gifts of the Magi*.

Elizabeth Tringali (Costume Designer), a retired English and Theater teacher, is happy to return to MET for *Head Over Heels* after her previous work as costume designer for MET's productions of *Pride and Prejudice*, and *Miss Bennett: Christmas at Pemberley*.

Tabetha White (Co- Lighting Designer) is a company member and a trustee at Maryland Ensemble Theatre, as well as the Arts Center Director at Frederick Community College. She is a theatre educator and artist in lighting design, properties, makeup, costumes, and scenic painting with a BFA in Theatre Design and Technology from West Virginia University. Highlights of her lighting work include *Phoebe in Winter* (Single Carrot Theatre) for the 2015 Woman's Voices Festival, the World Premiere of *Oedipus Rox* (Maryland Ensemble Theatre), *The Quickening* (Collaborative Theatre), and the NYC Fringe & Capital Fringe Festivals.





Out40
Est. 2013

THE ARTS, STREETS,
AND PEOPLE OF FREDERICK
WWW.OUT40.COM

WWW.OUT40.COM | 240-510UT40 | OUT40MEDIA@GMAIL.COM | KEY PARKWAY FREDERICK, MD

DOES YOUR CROWN NEED A LITTLE PICK-ME-UP?

**HELPER HAIR TO
THE RESCUE!**



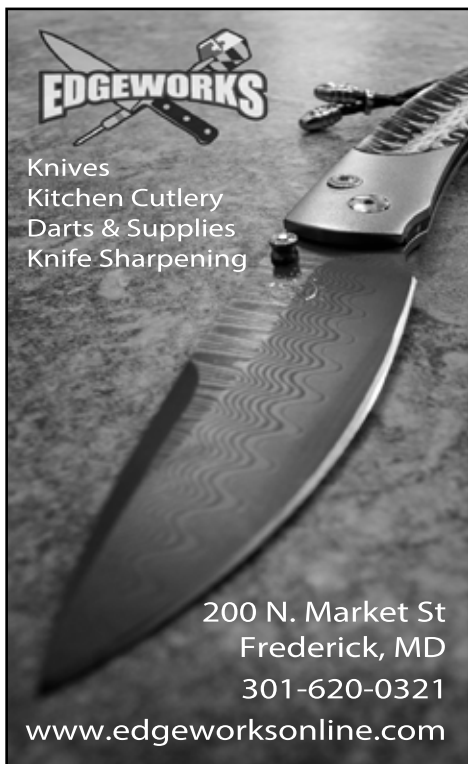
★ HIGH QUALITY WIGS AND HAIR PIECES
OWNED BY A TRADITIONAL WIG MAKER ★

FREDERICK WIG CO.

OPEN BY PRIVATE APPOINTMENT
7 N COURT ST. 21701
FREDERICKWIGCOMPANY.COM



Knives
Kitchen Cutlery
Darts & Supplies
Knife Sharpening



200 N. Market St
Frederick, MD
301-620-0321

www.edgeworksonline.com

Follow us on Instagram! @marylandensemble

SONG LIST/COMPOSERS/LYRICISTS/MUSIC PUBLISHERS

“Automatic Rainy Day” written by Regina Schock, Steve Plunkett, and Jane Wiedlin. Used by permission of Plunksongs (BMI), Schock It to Me Music c/o PEN Music Group Inc. (ASCAP) and Wiedwacker Music (ASCAP).

“Beautiful” by Charlotte Caffey and Regina Schock. Used by permission of Schock It to Me Music c/o PEN Music Group Inc. (ASCAP) and Universal Music- MGB Songs (ASCAP).

“Cool Jerk” by Donald Storboll. Used by permission of T/Q Music Inc. c/o BMG Bumblebee (BMI).

“Get Up and Go” by Charlotte Caffey and Jane Wiedlin. Used by permission of Universal Music- MGB Songs (ASCAP).

“Good Girl” by Charlotte Caffey and Jane Wiedlin. Used by permission of Universal Music- MGB Songs (ASCAP).

“Head Over Heels” by Charlotte Caffey and Kathy Valentine. Used by permission of Universal Music- MGB Songs (ASCAP) and Spirit Two Music Inc. o/b/o Spirit Services (ASCAP).

“Heaven is a Place on Earth” by Richard Nowels, Jr. and Ellen Shipley. Used by permission of BMG Bumblebee (BMI) and Spirit Two Music Inc. o/b/o Spirit Services Holdings, S.a.r.l (ASCAP).

“Here You Are” by James Vallance, Charlotte Caffey, and Jane Wiedlin. Used by permission of Wiedwacker Music (ASCAP), Chargo Music (ASCAP), and Universal Music- MGB Songs (ASCAP).

“How Much More” by Charlotte Caffey and Jane Wiedlin. Used by permission of Universal Music- MGB Songs (ASCAP).

“Lust to Love” by Charlotte Caffey and Jane Wiedlin. Used by permission of Universal Music- MGB Songs (ASCAP).

“Mad About You” by Paula Jean Brown, James Francis Whelan and Mitchel Young Evans. Used by permission of Universal Music- MGB Songs (ASCAP) and Len Freedman Music, Inc. on behalf of Lilac Drive Music (ASCAP).

“Our Lips are Sealed” by Jane Wiedlin and Terence Edward Hall. Used by permission of Universal Music- MGB Songs (ASCAP) on behalf of itself and Plangent Visions Music Ltd. (ASCAP).

“Skidmarks on My Heart” by Belinda Carlisle and Charlotte Caffey. Used by permission of Universal Music- MGB Songs (ASCAP) and Punishment Tunes c/o BMG Gold Songs (ASCAP).

“This Old Feeling” by Charlotte Caffey and Jane Wiedlin. Used by permission of Universal Music- MGB Songs (ASCAP).

“Turn to You” by Charlotte Caffey and Jane Wiedlin. Used by permission of Universal Music- MGB Songs (ASCAP).

“Vacation” by Charlotte Caffey, Kathy Valentine and Jane Wiedlin. Used by permission of Universal Music- MGB Songs (ASCAP) and Spirit Two Music Inc. o/b/o Some Other Music (ASCAP).

“Vision of Nowness” by Kathy Valentine and Craig Ross. Used by permission of Spirit Two Music Inc. o/b/o Some Other Music and Wigged Music (BMI).

“We Got the Beat” by Charlotte Caffey. Used by permission of Universal Music- MGB Songs (ASCAP).

MET STAFF

Producing Artistic Director..... Tad Janes
Interim Co-Managing Director
(Production & Operations)..... Melynda Burdette Wintrol
Interim Co-Managing Director
(Development & Outreach)..... Andrea Baker
Associate Artistic Director/Marketing Gené Fouché
Associate Artistic Director/
Artistic Director of The Fun Company Julie Herber
Technical Director..... Cody James
Audience Services Manager/Education Manager..... Zack Callis
Ensemble Manager..... Jeremy Myers
Comedy Night Manager..... Molly Parchment
Apprentice Coordinator Shayden Jamison

Special thanks to:

*Black Box Arts Center • Boonsboro High School Drama • Evangelical Reformed
United Church of Christ • Ashley Federico • Robin and Rick Gordon
Candace Mallow • McDaniel College Theatre • Parlights • Kama Storie
Dave and Donna Warman • Sam White • Y Arts Center*



THE MET ENSEMBLE

This group of actors, directors, designers, stage managers, and theatre managers work daily to make MET a success!

Lori Boyd	Kaydin Hamby	Jeremy Myers	Emeritus:
Sean Byrne	Matt Harris	Jennifer Pagano	Lisa Burl
Zack Callis	Ray Hatch- Terbush	Molly Parchment	Jeanine Evans
Karli Cole	Julie Herber	Olivia Pietanza	Joann Foltz
Stephen Craig	Cody James	Willem Rogers	Lorrie Lee
Bill Dennison	Shayden Jamison	Rachel Smith	Milee McDonald
David DiFalco	Tad Janes	Laura Stark	Mak Nichols
Jack Evans	Lauren Johnson	Mallorie Stern	Ken Poisson
Ashley Federico	Eric Jones	Amanda Thomas	Reiner Prochaska
Gené Fouché	Tom Majorov	Joe Waeyaert	Sarah Shulman
AJ George Wright	James McGarvey	Tori Weaver	
Shea-Mikal Green	Courtney McLaughlin	Sam White	
Doug Grove	Rona Mensah	Tabetha White	
		Melynda Burdette Wintrol	

BOARD OF TRUSTEES

Trish Southwell, Chair	Robin Jones	Cody Weinberg
Suzanne Beal	Lorrie Lee	Tabetha White
Shuan Butcher	Rona Mensah	Kathy Young
Marty Erlichman	Jeremy Myers	Kiki Wilson
Tad Janes	Laura Nolan	

ASSOCIATE ARTISTS

Andrew Baughman	Karen Heyser-Paone	Kayte Williams
Matt Baughman	Brian Irons	Peter Wray
Suzanne Beal	Anne Raugh	Daniel Wyland
Ira Domser	Alison Shafer	
Julie Heifetz	Joe Williams	

APPRENTICES

Bowie Baughman	Greysen Simmons	Maurlea Long
Gabriella Mendes	Madeleine Davis	Paolo Roberto Bonarriva



AUSHERMAN
FAMILY FOUNDATION



**The Ausherman Family Foundation
has a long history of empowering
change in Frederick through
its support of the arts.**

We believe that performing arts are essential to the well-being of a community. Through our capacity building operational support, we are proud to have played a part in MET's growth from a small, grass-roots all volunteer organization to the thriving professional organization it is today.

AushermanFamilyFoundation.org

ENVISION HOW YOU CAN GIVE

Make a donation or increase your donation to MET and your donation could be matched by the Ausherman Family Foundation. Behind every great performance and education program offered by MET is the generosity of our wonderful donors. We truly could not undertake the scope of our work without you. MET is a 501(c)3 non-profit corporation and all donations are tax-deductible to the extent allowable by law:



There are many ways to give:

1. Make a gift of cash now by placing a donation in our donation box in the lobby, make a donation online at www.marylandensemble.org, or mail your check made payable to “Maryland Ensemble Theatre” to 31 W. Patrick Street, Frederick, MD 21701.
2. Make your gift go twice as far with a matching gift from your participating employer. Many businesses will match your charitable contribution.
3. Donate stock by contacting Development Manager Andrea Baker at 301-694-4744, ext. 104, for wire-fund transfer instructions.
4. Give the gift of gab! Word of mouth is one of the most powerful marketing tools. We also love online reviews — Facebook or tweet about your experiences to help spread the word.
5. Leave a bequest in your will. Simply identify Maryland Ensemble Theatre, Tax ID#52-1964330 and the amount or percentage you wish to contribute.

Thank you for all that you do to make Frederick an exciting and artistically diverse place in which to live!

SUPPORT MET

Scan the QR code to make a donation right now!



MET SPONSORS

Thanks to all our sponsors!

GOVERNMENT SUPPORT

Frederick Arts Council & The National Endowment for the Arts
Maryland State Arts Council
The City of Frederick
Frederick County Government

FOUNDATION SUPPORT

Ausherman Family Foundation
Joseph D. Baker Fund
Delaplaine Foundation
Rotary Club of Carroll Creek Frederick
George L. Shields Foundation
Nora Roberts Foundation
The Shubert Foundation

CORPORATE SUPPORT (\$2,500+)

Bill Struever & Cross Street Partners
Key 103 & 106.9 The Eagle
Frederick Magazine
Frederick Coffee Company
FSK Apartments
Frederick News-Post

MET FUNDS

Leonard Diggs Memorial Fund
The Frank Greene Fund for New Work
The Tom & Marg Mills Memorial Fund

MET is a 501(c)3 non-profit, a professionally operated and an artistically accredited arts organization. A community and business partner, the MET is an artistic and economic asset to Frederick County and plays a vital role in shaping the cultural character and quality of life of our community.

MEMBERSHIP CIRCLE

DURANG'S DISCIPLES (\$10,000+)

Delaplaine Foundation, Inc.	Manning Media	The Shubert Foundation
The City of Frederick	Maryland State Arts Council	
Frederick County Government	Out40 Media	

LETTS' LEAGUE (\$5,000+)

Dr. Suzanne Beal	Joshua Pedersen on behalf	Rachel Sorenson &
Ted Delaplaine & Todd Wilson	of the Ausherman Family	Luis Lorie
Frederick Arts Council	Foundation	
	Nora Roberts Foundation	

O'NEILL'S OUTFIT (\$2,500+)

Constance Ahalt	James F. Hochadel	Walter Olson & Steve Pippin
Jack Day & Peter Brehm	Dennis Hoffman	Parlights, Inc.
The George L. Shields	& Brian Klass in honor of	PNC Bank
Foundation, Inc.	Allyson Haley	Kathy & Brian Young
Heart of the Civil War	The Joseph D. Baker	
Heritage Area, Inc.	Fund, Inc.	

SHEPARD'S SQUAD (\$1,000+)

John & Claudia Allemang	The Dr. George &	Dan Rice & Alison Shafer
Brewer's Alley	Carolyn Smith Fund	Ray Hatch-Terbush &
Coca-Cola Consolidated	Mary Herber	Ronald Terbush
draeEvents	Sharon & Daniel Kuebbing	Carol & Jack Topchik
	John & Mary Menke	United Way of Frederick
		County

PINTER'S POSSE (\$500+)

Sharon Lynne Adams	Rebecca Drzal	Renee & Russ O'Baker
The Carver Foundation	Susan Ferrara &	Carolyn Pleasant
Kathleen Costlow D'Amore &	David Lawrence	Bob & Rachel Zirlin
John D'Amore	Cody Gilliam	
Gerald & Ilse DelGripio	Judy & Richard Harkins	
Betty & Clyde Dismukes	Dorothy Hutchinson	
Rosemary Du Mont	Lorrie Lee	

BRECHT'S BUNCH (\$250+)

Chris & Sandi Arndt-Kohlway	Marty & Marianne Erlichman	Brandon & Katie Rice
Julia & Sam Castleman	Carolyn & Jack Greiner	Monica & Al Riscigno
Kimberly S. Chaney	Mark & Dottie Hamill	Laura Stark & Jon Harrington
CPA, LLC	Teresa M. Haycraft	Trish & Mark Southwell
Jill & Richard Cody	Beverly & Frank Kristine	Catharine Van Leeuwen-
Rich & Lori Cole	Thomas & Kate Majorov	Fairley
Barbara & Kenneth Daniel	Helen Maleady	Beth Williams &
Adrian & Laura Davidson	Karen Martin	Bob Herbertson
Sandra Dragotis	Milee & Merch McDonald	Melynda & John H. Wintrol
Doug Jones &	Rona Mensah	Tomy Wright
Robin Drummond	Ernest Naegele	

CHEKHOV'S CREW (\$100+)

Dorrine & Richard Armstrong	Fitzgerald	Linda Moran
Joseph & Karen Ashwal	Marian Furry-Hovde	Greg & Nina Myers
Phil Bagley	Mark & Sara Gibson	Laura & Patrick Nolan
Mike & Karen Barnes	Doug Grove	George & Sandy Oxx
Lori Beaudoin	Kira & John Hamman	Carole Lynne Price
Craig Bedard & Jen Blanton	Ed & Peggy Haser	Donna Quesada
Robin Bell & Kim Dine	Pat & Dave Herber	Charles Raeihle
Miriam Bolling	Laura Hession	Janna Raye
Scottie & Steve Burdette	Mary Lynn Hinde	Penny Rife
Brenda Campbell	Dr. Christine Hohmann	Terry Rosenstick
Eugene M. Campbell	ICF Consulting Group, Inc.	Barbara Rosvold
& Kathy O'Hara	Jennifer & Brian Irons	Michael G. Ryder
Comcast on behalf of	Joanne Ivancic	Steinhardt Brewing Co.
Jeremy Myers	Tad Janes & Genè Fouchè	Esta Sterneck
Susan Cooper	Del. Kenneth &	Shirley Stroup
Chris Currens	Dr. Helen Kerr	Marcy Taylor
Linda Despeaux	George & Susan Ladue	Brad Tehaan
Carol Dickson	Max Lilly	Moira Warnock
Joyce Dixon	Barb Lofts	Shannon Way
Thomas Dixon	Andrew Maguire	Elizabeth & John Willis
Mary Eldred	Dr. Brian R McNeill &	Judy Lyons Wolf
Joseph P. and Jean E	Kathryn Ann McKenzie	Andrew Zabetakis

MET would like to extend special thanks to those contributing to our Take-A-Seat Campaign through in kind donations or other assistance.

Ronald N. Young &
Senator Karen Lewis Young
Doug Grove
Rick Jones Electric
Lighthouse Construction
Irwin Seating
Parlights Stage Lighting

Maryland Deaf Community Center
Sheild Co.
Nick Long at Main Event Trophies
Ovations Theatre
Sommer Glass Co.
Zavos Architecture + Design

To all of our patrons, we extend a heartfelt

THANK YOU!

Maryland Ensemble Theatre strives to recognize all of our donors. Please let us know if your name is missing or if there are any inaccuracies by contacting abaker@marylandensemble.org.

MET is a 501(c)3 non-profit, a professionally operated and an artistically accredited arts organization. A community and business partner, MET is an artistic and economic asset to Frederick County and plays a vital role in shaping the cultural character of our community.



Cellar Door



ALL NEW MENU



**UNIQUE BAR +
EXCITING ENTERTAINMENT**

**SUNDAY
BRUNCH**
11:30 AM - 3:00 PM

5 E. Church St.
Frederick, MD 21701
301-695-8460
www.cellardoorfrederick.com

Enjoy Tacos & Tequila with Family & Friends
Catering • Weekend Entertainment • College + NFL Ticket



Tequila Bar



& Kitchen

137 N. Market St.
Frederick, MD 21701 (240)439-4367
www.agavel37.com

EST. 2022
AGAVE
Tequila Bar & Kitchen

137



SEASON PREVIEW!

Party with us at Steinhardt
Brewing on JUNE 18 as we
announce our next season!

Get your
FREE ticket

