

Sense and Sensibility





SEASON TICKETS

It's not too late!
Don't miss another show this season! Visit, call, or email the box office and we can give you credit for tonight's ticket toward your season ticket.

contact@marylandensemble.org



Sense and Sensibility

By Kate Hamill

Based on the Novel by Jane Austen

featuring

Bill Dennison*	Fred Fletcher-Jackson	Kira Gandolfo
Kiersten Gasemy	Shea-Mikal Green*	Christian Harris
Matt Harris*	Julie Herber*	Tad Janes*
Lauren McKenna	Justin Meyer	Elisa Rodero
Willem Rogers*		Tori Weaver*

Director

Gené Fouché*

Rehearsal Stage Manager Melynda Burdette Wintrol*	Production Stage Manager Sam White*	Assistant Stage Manager Gabriella Mendes
Scenic Designer Shana Joslyn*	Lighting Designer Cody James*	Sound Designer Kaydin Hamby*
Props Designer Lori Boyd*	Costume Designers Elizabeth Tringali Judy Harkins	Dramaturg Laura Stark*
Intimacy Coordinator Julie Herber*		Dialect Coach Eric Jones*

*Indicates MET Ensemble Member or Artistic Associate.

*The world premiere of SENSE AND SENSIBILITY was produced by Bedlam
(Eric Tucker, Artistic Director; Andrus Nichols, Producing Director).*

Produced through special arrangement with Broadway Licensing.

MET'S MAINSTAGE SEASON SPONSORS:



Additional support:



Joseph D. Baker
FUND



The
George L. Shields
Foundation

The Carver
Foundation



This project is supported in part by Frederick Arts Council and the National Endowment for the Arts.



FREDERICK

MARYLAND

On behalf of The City of Frederick, welcome to Maryland Ensemble Theatre and to our Arts and Entertainment District.

We are proud to be home to this professional ensemble company. For 26 years, MET has provided accessibility to high quality and thought-provoking theatre, helping ensure a diversity of opportunities for our community to experience visual and performing arts in Frederick.

Please use your interaction with MET as a catalyst to further explore the many entertainment, shopping, and dining options available in Frederick.

Enjoy the show!

Michael O'Connor
Mayor
City of Frederick

THE PERFECT BLEND ★ CAFE ★

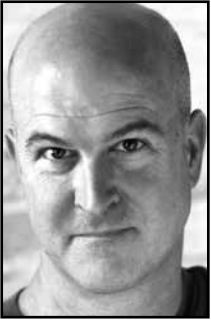
Mon - Fri: 7am - 4pm
Sat: 8am - 3pm
Sunday: Closed

31 West Patrick St.,
Frederick, MD
(301) 662-8020

thepureblendfrederick.com



FROM MET'S ARTISTIC DIRECTOR



With gratitude we welcome you to Maryland Ensemble Theatre! We are so excited to be presenting our 27th season of plays in downtown Frederick! Over the years we have carefully curated a collection of eclectic plays and original work and this season promises to continue that tradition.

We kick off this season with a recent adaptation of Jane Austin's *Sense and Sensibility* by Kate Hamill. For the holiday season our Ensemble alum Sarah Shulman has written a new play, *A Very Jewish Christmas*, that we will have its World Premiere. We start the spring with one of MET's favorite playwrights, Martin McDonagh (*Pillowman*, *Lt of Inishmore*, *Three Billboards East of Ebbing Missouri*, etc.) and the play that really kicked off his career with *The Beauty Queen of Leenane*. Next up is the new comedy *Jane Anger* by Talene Monahan and finishing up the season with another returning playwright to the MET stage, two-time Pulitzer Prize winner Lynne Nottage (*Sweat*, *Intimate Apparel*) with her newest play *Clyde's*.

MET connects. We build community by bringing people together for a shared experience. We are committed to high-quality theatre that will create a bond between our artists and audience. We hope you enjoy your time at MET.

Tad Janes
Producing Artistic Director

**THOUGHTFUL,
CONTEMPORARY,
CREATIVE.**



GENERATION MEDIA

Visit us:



GenerationMediaLLC.com



Multiple Emmy[®] & Telly[®] award winning video content.



THEATRE
FCC

Acting • Directing • Improvisation
Introduction to Drama • Stage Craft

301.846.2515 • frederick.edu/theatre

FROM THE DIRECTOR



I've always been drawn to physical comedies. One of my favorites to direct for MET was Patrick Barlow's *The 39 Steps*. Also, growing up with a mother who was a journalist and took me to the library weekly, I became a huge reader -- I'm rarely without a book. As a teenager I read and loved all of Jane Austen's most famous books, including *Sense and Sensibility*. When I first read Kate Hamill's adaptation, which included all the romance of the original set atop a madcap landscape of physicality, my immediate reaction was, "Yes, please!"

As a teenager I was fascinated by these young women navigating a world that seemed at times shut off to them. As an adult, I'm struck by the way in which Austen subtly fought against those antiquated ideals of courtship, inheritance, and social status. Kate Hamill's adaptation brings all of those themes to life and although she maintains the integrity of the original story, the addition of the physical world brings the comedy front and center.

This play is not without its challenges. There are 10 different locations in the first 20 pages of the script alone. There are also three different characters with the name of John - which is, consequently, the most popular man's name in Austen's works, a fact that was unearthed and brought to us by our fabulous dramaturg, Laura Stark.

Whether you're an avid Austen fan or know nothing about her world, we hope you'll appreciate Kate Hamill's take on the classic novel.

Gené Fouché
Director

*Comfortable
Atmosphere*



*Excellent
Food*

DOES YOUR CROWN NEED A LITTLE PICK-ME-UP?

HELPER HAIR TO THE RESCUE!



★ HIGH QUALITY WIGS AND HAIR PIECES
OWNED BY A TRADITIONAL WIG MAKER ★

FREDERICK WIG CO.

OPEN BY PRIVATE APPOINTMENT
7 N COURT ST. 21701
FREDERICKWIGCOMPANY.COM



Knives
Kitchen Cutlery
Darts & Supplies
Knife Sharpening



200 N. Market St
Frederick, MD
301-620-0321

www.edgeworksonline.com

VALLEY GRAPHIC SERVICE, INC.

is proud to support

Maryland Ensemble Theatre

Valley Graphic Service strives on being a *trusted and experienced* full service, in-house commercial printing company. Our reputation comes from the knowledgeable, dedicated and loyal family of employees. For over 30 years we have served a loyal base of satisfied customers locally and nationwide.

Choose Valley Graphic Service, we promise you will feel confident with your printing experience.

Call or email one of our experts today.

**Because There's
More to Printing,
Than Ink On Paper**



**VALLEY GRAPHIC
SERVICE, INC.**

93 Monocacy Blvd., Suite A-1
Frederick, Maryland 21701
301.694.8825 • 800.649.8825
sales@valleygs.com

CAST OF CHARACTERS

Fanny/Lucy/Lady Middleton/ Gossip.....	Kira Gandolfo
Col. Brandon/Thomas/Gossip.....	Bill Dennison
Marianne	Shea-Mikal Green
Elinor.....	Tori Weaver
Edward/Robert/Gossip.....	Matt Harris
John Dashwood/John Willoughby/Lady Middleton/Gossip ...	Willem Rogers
Margaret/Mrs. Ferrars/Gossip.....	Kiersten Gasemy
Mrs. Dashwood/Anne Steele/Gossip.....	Julie Herber
Mrs. Jennings/Gossip.....	Christian Harris
Sir John Middleton/Doctor/Servant/Gossip.....	Tad Janes
Gossip/John Middleton, Col. Brandon U/S.....	Fred Fletcher-Jackson
Gossip/Marianne, Fanny, Mrs. Dashwood U/S.....	Elisa Rodero
Gossip/Elinor, Margaret U/S.....	Lauren McKenna
Gossip/Edward, Mrs. Jennings U/S.....	Justin Meyer

There will be one 15-minute intermission.



Regional
Design
Firm
architect

Community
Focus
interiors

passiv

21 Byte Ct Ste I Frederick, MD
301.698.0020 za-d.com



BENEFACCTOR

EVENTS

DJ'S - LIGHTING & SOUND - EVENT PRODUCTION

BENEFACCTOREVENTS.COM
JARAD@BENEFACCTOREVENTS.COM
301-228-0963

 @BENEFACCTOREVENTSMSD  @BENEFACCTOREVENTS

Locally Owned Family Operated Restaurant

*Wood fired oven pizza, sandwiches,
salads, local beers & wine.*



Open Tuesday-Sunday
for dine-in, carry-out & delivery
Happy Hour Tuesday-Friday 3:00-6:00


The Garage | 1341 Hughes Ford Rd | 240-651-0987

STATION
BY SPENCE
PHOTOGRAPHICS



57715

240.529.3738 INFO@SILLYSTATION.COM

 #sillystation

SILLYSTATION.COM

 /sillystation

★ PHOTO BOOTH ★

PREPARE FOR THE GREAT OUTDOORS.

HIKING BACKPACKING CAMPING ROCKCLIMBING X-COUNTRYSKIING



17 South Market Street Downtown Frederick

the TRAILHOUSE

301.694.8448 trailhouse.com

WHO'S WHO



Bill Dennison



Fred Fletcher-Jackson



Kira Gandolfo



Kiersten Gasemy



Shea-Mikal Green



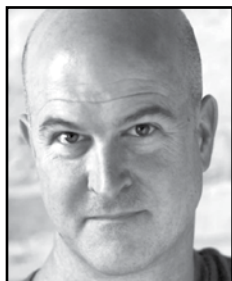
Christian Harris



Matt Harris



Julie Herber



Tad Janes



Lauren McKenna



Justin Meyer



Elisa Rodero



Willem Rogers



Tori Weaver

WHO'S WHO

Bill Dennison (Col. Brandon/Thomas/Gossip) is a proud MET ensemble member. Other MET credits include: Pod in Fun Company's *The Borrowers*, Man in Suit in *Dragons Love Tacos*, and Mr. Darcy in *Miss Bennet: Christmas at Pemberly*. Recent favorite roles are *Sideways* (Miles), *The Play That Goes Wrong* (Chris), *A Few Good Men* (Sam), and *True West* (Austin). Next at MET, you can see him in *The Beauty Queen of Leenane* as Pato and *Jane Anger* as William Shakespeare.

Fred Fletcher-Jackson (Gossip/John Middleton, Col. Brandon U/S) is honored to be making his MET debut! By day, Fred teaches theatre and visual arts at Middletown Middle School, also directing the school productions. Fred is a professional wrestler, training and performing since 2017 with the Renaissance Rumble wrestling school and Baltimore's EWA Pain Factory. A lifelong game show fan, Fred appeared twice in 2023 on TV's Wheel of Fortune, winning a combined cash-and-prize total of \$97,750. www.fredfletcherjackson.com

Kira Gandolfo (Fanny Dashwood/Lucy Steele/Lady Middleton/Gossip) is a DC-based actor, director and creative. She is a recent graduate of Boston University where she received her BFA in Acting as well as a Minor in Dance. This marks Kira's first production with MET and she could not be more excited to share this Austenian tale with audiences. Dedicated to my mom and

her Jane Austen obsession. she/they @kiragandolfo kiragandolfo.com

Kiersten Gasemy (Margaret Dashwood/ Mrs. Ferrars/ Gossip) is thrilled to be back on the MET stage. She is an alumna of Point Park University and Broadway Dance Center's Professional Semester, where she studied dance and musical theater. Recent performance credits include *Head Over Heels* (MET), *Footloose*, *Evil Dead*, *The Holiday Channel...*(CT), In addition, recent choreography credits include *Newsies* (OVT), *Urinetown* (McDaniel) and *Evil Dead* (CT). She is grateful to have worked alongside this incredible cast and production team and as always, would like to thank her friends, family, mentors, and Sean, for their constant love and support.

Shea-Mikal Green (Marianne Dashwood) holds an MFA in Devised Performance and Movement from Pig Iron School / University of the Arts in Philadelphia. A ensemble member at MET, actor, deviser/creator, and director, Green was awarded an artist residency at Cow House Studios in Ireland and at The Iron Factory in Philly to create original devised works. Previous MET credits include *The Squirrels*, *Angels in America: Part One Millennium Approaches and Part Two Perestroika*, *Meteor Shower*, *Bad Jews*, *The Importance of Being Earnest*, *One Man, Two Guvnors*, *Bloody Bloody Andrew Jackson*, *Clybourne Park*. www.shea-mikalgreen.com

WHO'S WHO

Christian Harris (Mrs. Jennings/Gossip) is a DMV-based actor and is excited to work on his first MET show! He is a recent graduate from Hofstra University, and last June, he played Teddy in *GAY Love Jones* in Houston, Texas. Christian would like to thank his parents, family, and friends for always supporting him.

Matt Harris (Edward/Robert/Gossip) (he/him) is an actor, voiceover artist, director, and improviser based in the DMV. As part of MET's Ensemble he has performed in *The Squirrels*, *Radium Girls*, *Peter and the Starcatcher*, and *The Dinosaur Play*. He is an improviser and Dungeon Master for Oh CRIT! The D&D Improv Show and has performed at PAX Unplugged, AwesomeCon, MAGFest and more. Other favorite roles include 5 productions of *Romeo & Juliet*, *As You Like It*, *The 39 Steps*, *Timon of Athens*, and *Into the Woods*. Matt's recent audiobooks are available on Audible. MattHarrisActor.com

Julie Herber (Mrs. Dashwood/Anne Steele/Gossip) is Associate Artistic Director of the Maryland Ensemble Theatre and Artistic Director of The Fun Company. MET credits include: *Angels in America Pt 1 & 2*, *Craft Town*, *Sweat*, *Circle Mirror Transformation*, *Curse of the Starving Class*, *Radium Girls*, *Fred's Diner*, *Top Girls*, *Superior Donuts*, *Oedipus Rox*, *Stupid F**king Bird*, *Good People*, *Clybourne Park*, *Who's Afraid of Virginia Woolf*, *The Glass Menagerie*, *Eight Reindeer Monologues*, *Dead Man's Cell Phone*, *Dusty & the Big Bad World*, *The*

Canterbury Tales, *A Doll's House*, *Almost Maine*, *Macbeth*, *Killer Joe*, *Company*, *Planet Claire*.

Tad Janes (Sir John Middleton/Doctor/Gossip) is the Founding Producing Artistic Director of MET and Theatre Program Manager at Frederick Community College. BFA from West Virginia University and Masters from the University of Kent in Canterbury and Goucher College. MET mainstage: *The Squirrels*, *Curse of the Starving Class*, *A View from the Bridge*, *Superior Donuts*, *Who's Afraid of Virginia Woolf?*, *The 39 Steps*, *Macbeth*, *American Buffalo*, *Killer Joe*, *How I Learned to Drive*, *True West*, *The Threepenny Opera*, *A Christmas Carol* and his original solo show *Truthpaste: A Blotto Biography*.

Lauren McKenna (Gossip, Elinor & Margaret U/S) is thrilled to perform in her first MET production! She has previously been behind the scenes at MET as ASM for *The Revolutionists* and *A Christmas Carol*. Recent credits include *Clybourne Park* (Lindsay/Betsy), *Twisted Tales of Poe* (The Caretaker), *Lipstick Lobotomy* (*Rosemary Kennedy*), *Junie B. Jones: The Musical* (*Junie B.*), *Urinetown* (*Little Sally*), and *Heathers: The Musical* (Heather McNamara). She received a Bachelor's in Theatre Arts from McDaniel College.

Justin Meyer (Gossip/Edward, Mrs. Jennings U/S) is a DC-based actor and passionate storyteller delighted to make his MET debut. Theatre credits include *Madame Quixota's Last Words* (Transformation Theatre, Inc.), *Much Ado About Nothing/Béatrice*

WHO'S WHO

et Bénédicte (Shakespeare Opera Theatre), *Nightfall with Edgar Allan Poe* (StageCoach Theatre Co.), and *Art of Murder* (Workhouse Arts Center). Screen credits include supporting roles in true crime documentaries *Panic 9-1-1* and *CopyCat Killers*. He thanks his family and friends for their continued support.

Elisa Roderer (Gossip, Marianne, Mrs. Dashwood, Fanny U/S) Favorite roles include Arlie in *Getting Out* and Louise Maske in Steve Martin's *The Underpants*. After an eleven-year theater hiatus, she's thrilled to join the incredibly talented people at MET. She thanks Gené and Melynda for this opportunity, and her family, Ray, and her Coffee Coven for their unwavering support. When not on stage, Elisa is a henna artist and an editor.

Willem Rogers (John Dashwood/Willoughby/ Lady Middleton/Gossip) is a Baltimore native and MET Ensemble Member who is excited to be taking part in his fourth production with MET. Previous roles include *The Squirrels*, (Carolinesis), *Christmas at Pemberley* (Charles Bingley) and *Lifespan of a Fact* (Jim Fingal U/S). Willem has also appeared in *A Midsummer Night's Dream* (Lysander) and *Romeo and Juliet* (Romeo) with the Chesapeake Shakespeare Company.

Tori Weaver (Elinor Dashwood) is a MET Ensemble Member and graduate of AMDA in NYC. Thrilled to be back for another Austen show at MET! MET credits: *Head Over Heels*, *Angels in America Parts 1 and*

2, Intimate Apparel, *Miss Bennett: Christmas at Pemberley*, *Pride and Prejudice*. Favorite regional credits include Tammy in *Escape to Margaritaville*, Rosa Bud in *The Mystery of Edwin Drood*, Lady of the Lake in *Spamalot*, and Baker's Wife in *Into the Woods*.

Kate Hamill (Playwright) Kate Hamill is an award-winning actor and playwright, known for her subversive contemporary adaptations of classical works like *Sense and Sensibility*, *Pride and Prejudice*, *Vanity Fair*, *Little Women*, and *Mansfield Park*. *The Wall Street Journal* named Hamill Playwright of the Year in 2017, and she was one of the top five most-produced playwrights in 2018-19.

Gené Fouché (Director) is an Associate Artistic Director and company member with MET, but also contributes as a graphic designer for Mainstage productions. MET directing credits include: *Head Over Heels*, *The Lifespan of a Fact*, *The Revolutionists*, *Sweat*, *Superior Donuts*, *The 39 Steps*, *Killer Joe*, *Something Brilliant Will Come to Us*, *Skin Deep*, *The 25th Annual...Spelling Bee*, *Family Holiday*, *The 5th of July* among others. Regionally she has directed for Landless Theatre, Fun Company, McDaniel College and Tell Baby Productions. Gené is the department chair of Theatre Arts at McDaniel College.

Lori Boyd (Props Designer) is a MET ensemble member. MET credits include: *Sense and Sensibility*, *Three Swinging Pigs* (FunCo), *Head Over Heels*, *The Squirrels*, *Intimate Apparel*, *Inebriated Holiday*, *Angels*

WHO'S WHO

in America: Perestroika, South and Saints, Angels in America: Millennium Approaches, Detroit

67, and *The Ultimate Christmas Story*. Best Medicine Repertory Theater: (both on and behind the scenes) *The Crater Sisters' Christmas Musical*: co-wrote, directed, propped, and appeared in, and *The Texas Homecoming Revolution of 1995*: costume/props. Film and television credits include *The Jester*: Cinematic Productions: Production Designer, *A Very Stinky Summer*: Cinematic Productions, Art Dept. Co-director, and *American Titans*: Wilma Television/Discovery Studios, Art Dept.

Kaydin Hamby (Sound Designer) holds a BA in Theatre Design and Production from UMBC. A MET Ensemble Member, past MET credits include *Head Over Heels* (Guitar 1), *Angels in America Parts 1 & 2, Revolutionists, Meteor Shower, Admissions, Circle Mirror Transformation* (Sound Designer), *Christmas Carol, The Tempest* (Audio Engineer). Kaydin is the musical director of MET Comedy Night's *Off Key: An Improvised Musical* and a Frederick-based singer/songwriter/musician. Listen and learn more at KaydinHamby.com.

Judy Harkins (Costume Designer) is back for her third show costuming for MET, partnering with Libby Tringali. Previous credits include *Head Over Heels, Pride and Prejudice*, and *Miss Bennett: Christmas at Pemberley*.

Cody James (Lighting Designer & Technical Director) is a theatre maker specializing in writing, directing and designing engaging theatre experiences with groups local to Western and Central Maryland as well as Eastern West Virginia. Cody received their MA in Drama and Theatre Studies at NUI Galway in 2020 and is the full time Technical Director and a company member at Maryland Ensemble Theatre. Cody is also a founding member and Artistic Director of Red Hill Theatre Group.

Eric Jones (Dialect Coach) is a proud company member of both MET and the Comedy Pigs. They have worked as a dialect coach for many MET productions including *The Importance of Being Earnest, The 39 Steps, The Elephant Man, Angels in America*, and *Intimate Apparel*.

Shana Joslyn (Scenic Designer) is the assistant professor of theatre design and technology at McDaniel College. She has been designing scenery, lighting, props, sound, and video for over 25 years. Along with theatre, she has designed opera, dance, and national acts such as Eddie Money, Anthrax, Mary Wilson, and Nazareth. Some of her most memorable designs were *Matilda, Silent Sky, The Vibrator Play, Angels in America: the Millennium Approaches*, and *Perestroika*. She is currently the chair of Design, Technology, and Management for the Kennedy Center American College Theatre Festival Region 2. Shana resides in Maryland with her wife Ashley and cat Olive.

WHO'S WHO


Gabriella Mendes (ASM; she/her): Past MET credits include: *The Squirrels* (Deck Crew), *Intimate Apparel* (ASM), and *Inebriated Holiday* (ASM). She is an alumna of the MET Apprenticeship Program (Directing and Performance concentration), and holds a BA from The American University of Paris, where she was the Program Coordinator for their student-led Performing Arts Company, VIVRE. During her time there, she also acted in plays including *Constellations*, *Dry Land*, and *Naomi in the Living Room*. @gabiolimendes

Laura K. Stark (Dramaturg) is a MET ensemble member and Jane Austen enthusiast. She portrayed Mrs. Bennett in MET's production of *Pride and Prejudice* and was the dramaturg for *Christmas at Pemberley*. Laura's favorite Jane Austen novel is *Persuasion*, and her favorite Jane Austen movie is *Emma*, with *Sense and Sensibility* coming

in a close second. (Although nothing can beat Colin Firth in the BBC's production of *Pride and Prejudice* – if you know, you know!) Laura hopes that this production of *Sense and Sensibility* will make a fan of Austen out of you, unless you are already an Austenite. She extends special thanks to Kate Hamill for bringing Austen onto the stage and Gené Fouché for encouraging all the fun research!

Elizabeth Tringali (Costume Designer) is so happy to return to Regency costume design for *Sense and Sensibility*. Previous credits include costume design for the MET productions of *Head Over Heels*, *Pride and Prejudice*, and *Miss Bennett: Christmas at Pemberley* and directing and costume design for TJSTAGE, part of Frederick County Public Schools.

Melynda Burdette Wintrol (Co-Managing Director, Production & Operations) is a performer, teaching artist, stage manager, and



**MET'S
FUN
COMPANY**

**Introduce the joy of
theatre to the young
ones in your life!**



WHO'S WHO

arts administrator. She is a proud MET Ensemble Member celebrating her 6th season at MET. Her favorite Stage Management credits include *Parsifal* (ASM; Washington National Opera), *Sweat* and *The Lifespan of A Fact* (SM; MET). Melynda has performed at Signature Theatre, Olney Theatre Center, Toby's Dinner Theatre, Cumberland Theatre, Riverside Center for the Performing Arts, MET, and more! www.melyndaburdette.com

Sam White (Stage Manager) is a stage manager and theater artist based in western Maryland. They have found a home at MET and are proud to be an ensemble member. MET: *The Squirrels*, *Dragons Love Tacos*, *The Commedia Cinderella*, *CraftTown*. CATF: *Tornado Tastes Like Aluminum Sting*. Shakespeare on the Spot: *Romeo & Juliet & Improv*. RHTG: *I Was Made For Less*, *I Build Giants*, *Stop Kiss*. ESPtheatre: *Twelfth Night*. MEG: *An Evening with Poe*, *Romeo & Juliet*. "Love your process."

MET STAFF

Producing Artistic Director	Tad Janes
Interim Co-Managing Director (Production & Operations).....	Melynda Burdette Wintrol
Interim Co-Managing Director (Development & Outreach).....	Andrea Baker
Associate Artistic Director/Marketing	Gené Fouché
Associate Artistic Director/ Artistic Director of The Fun Company	Julie Herber
Technical Director.....	Cody James
Audience Services Manager/Education Manager.....	Zack Callis
Marketing Associate.....	Gabriella Mendes
Ensemble Manager.....	Jeremy Myers
Comedy Night Manager.....	Molly Parchment
Apprentice Coordinator	Shayden Jamison
Lead Teaching Artist	Karli Cole



DID YOU KNOW?
MET offers adult classes in
Acting & Improv



THE MET ENSEMBLE

This group of actors, directors, designers, stage managers, and theatre managers work daily to make MET a success!

Lori Boyd
Sean Byrne
Zack Callis
Karli Cole
Stephen Craig
Bill Dennison
David DiFalco
Jack Evans
Ashley Federico
Gené Fouché
AJ George Wright
Shea-Mikal Green
Doug Grove
Kaydin Hamby
Matt Harris
Ray Hatch-Terbush
Julie Herber
Cody James

Shayden Jamison
Tad Janes
Lauren Johnson
Eric Jones
Tom Majorov
James McGarvey
Rona Mensah
Jeremy Myers
Jennifer Pagano
Molly Parchment
Olivia Pietanza
Willem Rogers
Rachel Smith
Laura Stark
Mallorie Stern
Amanda Thomas
Joe Waeyaert
Tori Weaver

Sam White
Tabetha White
Melynda Burdette
Wintrol

Emeritus:
Lisa Burl
Jeanine Evans
Joann Foltz
Lorrie Lee
Milee McDonald
Mak Nichols
Ken Poisson
Reiner Prochaska
Sarah Shulman

BOARD OF TRUSTEES

Trish Southwell, Chair
Suzanne Beal
Marty Erlichman
Tad Janes
Robin Jones

Lorrie Lee
Rona Mensah
Jeremy Myers
Laura Nolan
Cody Weinberg

Tabetha White
TJ Riggs
Kathy Young
Kiki Wilson

ASSOCIATE ARTISTS

Matt Baughman
Suzanne Beal
Evan Carrington
Steve Custer

Ira Domser
Shana Joslyn
Sache Satta
Alison Shafer

Jerry Stropnický
Peter Wray



MET'S ENSEMBLE
School
Acting and Improv classes for ages 7 – adult!

New classes begin in September and February

ENVISION HOW YOU CAN GIVE

Make a donation or increase your donation to MET and your donation could be matched by the Ausherman Family Foundation. Behind every great performance and education program offered by MET is the generosity of our wonderful donors. We truly could not undertake the scope of our work without you. MET is a 501(c)3 non-profit corporation and all donations are tax-deductible to the extent allowable by law:



There are many ways to give:

1. Make a gift of cash now in our donation box in the lobby, donate online at www.marylandensemble.org, or mail your check made payable to “Maryland Ensemble Theatre” to 31 W. Patrick Street, Frederick, MD 21701.
2. Make your gift go twice as far with a matching gift from your participating employer. Many businesses will match your charitable contribution.
3. Donate stock by contacting Co-Managing Director Andrea Baker at 301-694-4744, ext. 702 or abaker@marylandensemble.org, for wire-fund transfer instructions.
4. Give the gift of gab! Word of mouth is one of the most powerful marketing tools. Share your experience at MET on social media and complete a Google review to help spread the word.
5. Leave a bequest in your will. Simply identify Maryland Ensemble Theatre, Tax ID#52-1964330 and the amount or percentage you wish to contribute.

Thank you for all that you do to make Frederick an exciting and artistically diverse place in which to live!

SUPPORT MET

Scan the QR code to make a donation right now!



MET SPONSORS

Thanks to all our sponsors!

GOVERNMENT SUPPORT

Frederick Arts Council & The National Endowment for the Arts
Maryland State Arts Council
The City of Frederick
Frederick County Government
Visit Frederick

FOUNDATION SUPPORT

Ausherman Family Foundation
Joseph D. Baker Fund
Delaplaine Foundation
Rotary Club of Carroll Creek Frederick
George L. Shields Foundation
Nora Roberts Foundation
The Shubert Foundation

CORPORATE SUPPORT (\$2,500+)

Bill Struever & Cross Street Partners
Key 103 & 106.9 The Eagle
Frederick Magazine
FSK Apartments
Frederick News-Post

MET FUNDS

Leonard Diggs Memorial Fund
The Frank Greene Fund for New Work
The Tom & Marg Mills Memorial Fund

MET is a 501(c)3 non-profit, a professionally operated and an artistically accredited arts organization. A community and business partner, the MET is an artistic and economic asset to Frederick County and plays a vital role in shaping the cultural character and quality of life of our community.

MEMBERSHIP CIRCLE

DURANG'S DISCIPLES (\$10,000+)

Ausherman Family Trust	The City of Frederick	The Shubert Foundation
Delaplaine Foundation, Inc.	Maryland State Arts Council	Visit Frederick

LETTS' LEAGUE (\$5,000+)

Frederick Arts Council	Ted Delaplaine & Todd Wilson	The Nora Roberts Foundation
Suzanne Beal	Rachel Schwartz & Luis Lorie	

O'NEILL'S OUTFIT (\$2,500+)

Constance Ahalt	PNC Bank	James F. Hochadel
The Joseph D. Baker Fund, Inc.	Jack Day & Peter Brehm The Gaslight Gallery	Parlights, Inc. Kathy Young

SHEPARD'S SQUAD (\$1,000+)

John & Claudia Allemang Brewer's Alley	Sharon & Daniel Kuebbing John & Mary Menke	Ronald Terbush & Ray Hatch-Terbush
Coca-Cola Consolidated draeEvents	Dan Rice & Alison Shafer The Dr. George & Carolyn Smith Fund	Sherri Troutman & Todd Troutman
Dorothy Hutchinson		Carol & Jack Topchik

PINTER'S POSSE (\$500+)

Sharon Lynne Adams	Betty & Clyde Dismukes	Judy & Richard Harkins
The Carver Foundation	Keith & Rebecca Drzal	Doug Jones & Robin Drummond
Julie & Sam Castleman	Rosemary Du Mont	Helen Maleady
Jill & Richard Cody	Martin & Marianne Erlichman	Renee & Russ O'Baker
Rich & Lori Cole	Susan Ferrara & David Lawrence	Octavo Designs
Kathleen Costlow D'Amore & John D'Amore	Cody Gilliam	Trish & Mark Southwell
Gerald & Ilse DelGrippo	Dottie & Mark Hamill	Bob & Rachel Zirlin

BRECHT'S BUNCH (\$250+)

Chris & Sandi Arndt-Kohlway	Teresa M. Haycraft	Carolyn Pleasant
Barbara & Ken Daniel	Beth Williams & Bob Herbertson	Brandon & Katie Rice
Kenneth & Barbara Daniel	Lorrie Lee	Monica & Al Riscigno
Sandra Dragotis	Thomas & Kate Majorov	Laura Stark & Jon Harrington
Mary & Jack Eldred	Karen Martin	Melynda & John Wintrol
Catharine Van Leeuwen-Fairley	Greg & Nina Myers	Judy Lyons Wolf
Carolyn & Jack Greiner	Walter Olson & Steve Pippin	

CHEKHOV'S CREW (\$100+)

Dorinne & Richard
Armstrong
Joseph & Karen Ashwal
Lori Beaudoin
Craig Bedard &
Jen Blanton

Robin Bell & Kim Dine
Miriam Bolling
Scottie & Steve Burdette
Comcast on behalf of
Jeremy Myers

Samwit Dangol
Laura Davidson

Carol Dickson
Jean Fitzgerald
Randy Fouché
Patty & John Hovde

ICF Consulting Group, Inc.

Maggi McGrath

Mark & Sara Gibson

Donna Goff

Doug Grove
Kira & John Hamman
Brenda Youngren &
Patrick Hammett
Ed & Peggy Haser
Mary Herber
Pat & Dave Herber
Laura Hession
Dr. Christine Hohmann
Joanne Ivancic
Tad Janes & Genè Fouché
George & Susan Ladue
Max Lilly
Barb Lofts
Milee & Merch McDonald
Dr. Brian R. McNeill &
Kathryn Ann McKenzie
Rona Mensah
Ernest Naegele
Laura & Patrick Nolan
JoAnn Nolan

Michael Ostfeld
George & Sandy Oxx
Carole Lynne Price
Charles Raeihle
Penny Rife
Barbara Rosvold
Kenneth & Helen Kerr
Michael G. Ryder
Jan Samet O'Leary
Jeff & Starr Schaeberle
Esta Sterneck
Shirley Stroup
Marcy Taylor
Brad Tehaan
Moirá Warnock
Shannon Way
Julie Whitehair
Elizabeth & John Willis
The Wood Family

EIN #52-1964330

MET is a 501(c)3 non-profit, a professionally operated and an artistically accredited arts organization. A community and business partner, MET is an artistic and economic asset to Frederick County and plays a vital role in shaping the cultural character of our community.”

To all of our patrons, we extend a heartfelt

THANK YOU!

Maryland Ensemble Theatre strives to recognize all of our donors. Please let us know if your name is missing or if there are any inaccuracies by contacting abaker@marylandensemble.org.

VOLUNTEER!

Volunteer your services as an usher, concessions assistant, or office helper.

We need your smarts, your smile, and your style!

Email contact@marylandensemble.org,



AUSHERMAN
FAMILY FOUNDATION



**The Ausherman Family Foundation
has a long history of empowering
change in Frederick through
its support of the arts.**

We believe that performing arts are essential to the well-being of a community. Through our capacity building operational support, we are proud to have played a part in MET's growth from a small, grass-roots all volunteer organization to the thriving professional organization it is today.

AushermanFamilyFoundation.org

COMEDY NIGHT

October 4 & 5
The Comedy Pigs

October 11
That's What She Said

*Shows every
Friday
and some
Saturdays!*



October 18 & 19
Oh Crit!

October 25
Key City Improv

THE ROCKY HORROR SHOW



**Music, Lyrics
& Book by
Richard O'Brien**

OCT 31 - NOV 2

**FREDERICK
COMMUNITY COLLEGE**
Jack B Kussmaul Theatre
7932 Opossumtown Pike, Frederick

Frederick Community College prohibits discrimination against any person on the basis of age, ancestry, citizenship status, color, creed, ethnicity, gender identity and expression, genetic information, marital status, mental or physical disability, national origin, race, religious affiliation, sex, sexual orientation, or veteran status in its activities, admissions, educational programs, and employment.



**THEATRE
FCC**